

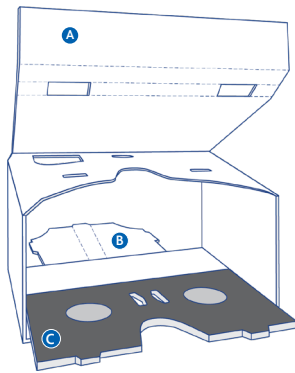
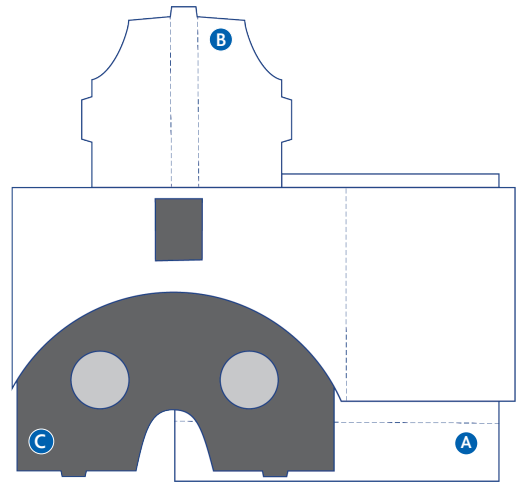
How to Setup Your VR Headset:

Your viewer will come flat and inside a sleeve.
You do not need the sleeve to assemble the viewer.

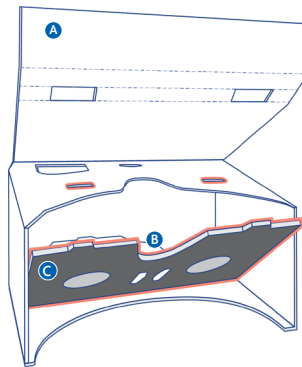
The parts of the viewer you are going to move while assembling are labeled in the diagram as A, B, and C.

Turn this page over for quick links to your VR content.

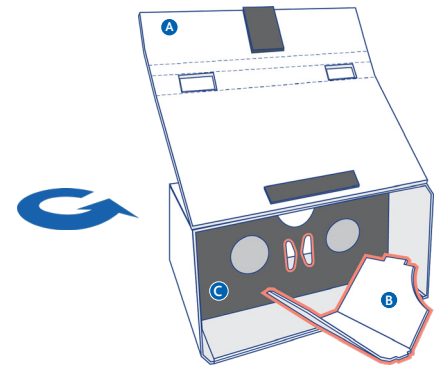
For more detailed instructions or troubleshooting, please go to pbswisconsin.org/vr-viewer.



1 Unfold your viewer so that it forms a rectangle. Hold the viewer as pictured above to start.



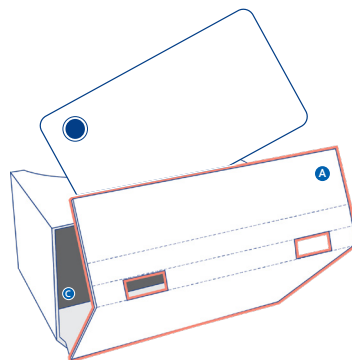
2 Fold the viewing panel (C) towards the inside of the rectangle until it snaps into the pair of matching slots.



3 Fold in the sides of the nose bridge (B). Fold piece B towards piece C until it snaps into the slots on C and the top of the viewer.



4 Load the content you want to view on your phone. Follow any instructions included in the content to enable VR mode.



5 Flip the headset over. Fold flap A up along the fold lines. Insert your phone behind flap A with the screen facing in. Secure using the velcro.

Please note:

You may need to remove your phone case to fit your phone in the viewer.

Make sure you secure the velcro tightly.

If you have questions or are having trouble assembling the viewer, please go to pbswisconsin.org/vr-viewer for more detailed instructions.

SHIPWRECKS!

THE
IMMERSIVE EXPERIENCE

Connecting to Shipwrecks! The Immersive Experience

For the best viewing experience:

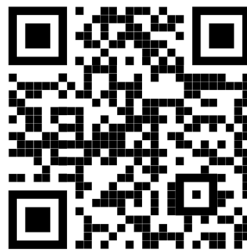
- Make sure your phone is not zoomed in.
- Set your phone so that it can't fall asleep.
- Make sure your screen can rotate horizontally.

Loading the content:

- Sit down in a chair that spins if you have one.
- Turn up your volume or use headphones.
- Scan the QR code using your phone's camera or type in the link to the experience you want to view.
- Touch the VR mode icon to activate it. When VR mode is on, your screen will be split into two views.
- Make sure the vertical white line on your device screen lines up with the middle of the headset.
- Follow any instructions in the content on how to start and navigate the content.
- Take breaks between experiences to reduce risk of motion sickness and fatigue. If you experience vertigo or other discomfort, do not use the VR viewer. Instead, use a web browser.



S.S. Wisconsin: 360 Dive



Time: 4 min.

Dive into the depths of Lake Michigan to explore the 1929 wreck of the S.S. Wisconsin.

Note: This experience must be viewed using the YouTube app.

<http://pbswisconsin.org/shipwrecks/dive>



S.S. Wisconsin: The Sinking



Time: 10-30 min.

Follow Fred Meno as he investigates the tragedy of the S.S. Wisconsin and recreates the happenings of October 28th, 1929 through the statements of the crew.

<http://pbswisconsin.org/shipwrecks/sinking>



S.S. Wisconsin: Shipwreck



Time: 10-30 min.

Dive deeper into the wreck of the S.S. Wisconsin. Uncover the history of the salvaging efforts and go inside the wreck to see what remains of the ship and the cargo onboard.

<http://pbswisconsin.org/shipwrecks/wreck>