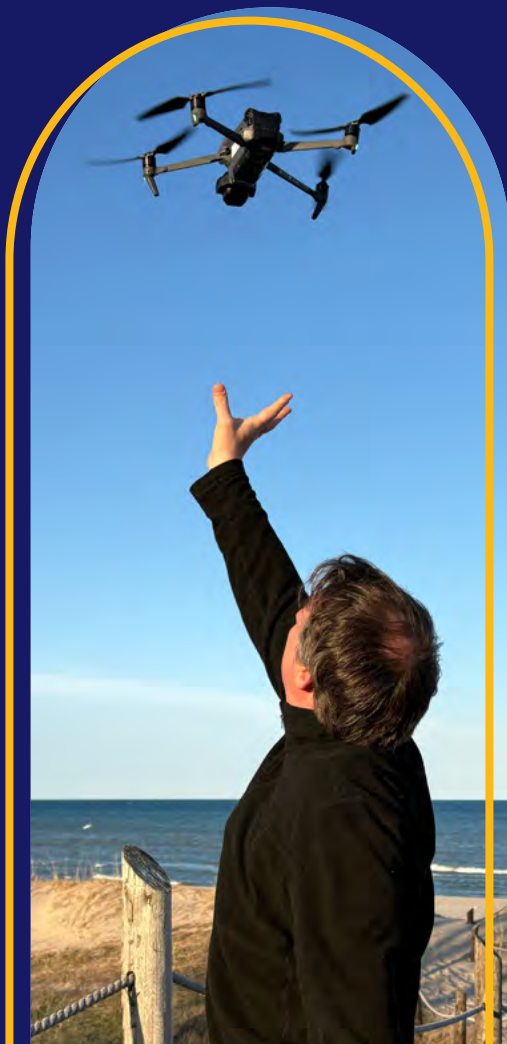




 PBS Wisconsin

 WISCONSIN  
PUBLIC RADIO

# 2025 IMPACT REPORT



KEEPING  
PUBLIC MEDIA  
STRONG  
TOGETHER IN  
WISCONSIN



Cover images, left to right, top to bottom:

PBS Wisconsin Videographer Lina Soblyte films in Cornucopia for *Wisconsin's Scenic Treasures*.

WPR *Wisconsin Today* Producer Mackenzie Krumme records audio for a story about *Belong Wisconsin*, a camp in Plymouth for foster children.

PBS Wisconsin *Wisconsin Life* host Angela Fitzgerald filming at the Wisconsin Science Festival

WPR Reporter Joe Schulz conducts an interview at the Wisconsin State Fair in West Allis.

WPR News Editor Jenny Peek records swan songs for a story.

PBS Wisconsin Producer Jeff Pfeiffer captures aerial shots with a drone.



# TABLE OF CONTENTS

- 4** Who We Are
- 5** A Message From Our Leaders
- 6** Statewide Reach at a Glance
- 7** News
- 10** Education
- 13** Events & Engagement



- 16** Arts, Culture & Wisconsin Voices
- 19** Awards & Recognition
- 20** Financial Snapshot
- 21** Donor Recognition & Gratitude
- 31** Looking Ahead
- 31** Land Acknowledgment



This page, left to right:

The Madison East High School Strings Ensemble performs near a Madison bike path to promote the WPR Music Network.

New Orleans singer-songwriter Joy Clark is one of the many artists featured in PBS Wisconsin's *Mile of Music*.

PBS Wisconsin staff share the new educational video game, *Powwow Bound: A Menominee Homecoming*, at the 57th Annual Menominee Nation Contest Powwow.

Former Wisconsin Poet Laureate Nicholas Gulig narrates PBS Wisconsin's *Welcome Poets*.

# WHO WE ARE

## Wisconsin's Trusted Source for Insights, Inspiration, and Connection

Every day, PBS Wisconsin and Wisconsin Public Radio (WPR) serve people across our state with trusted journalism and Wisconsin storytelling, educational resources and lifelong learning, music and cultural programming – on air, online, and in person through live events, freely accessible to all and powered by community support.

Rooted in the Wisconsin Idea, the belief that knowledge should improve life for all, we are public media made **by, for, about, and with** the people of Wisconsin. We are a shared civic space where communities come together to learn, listen, and see themselves reflected. We tell Wisconsin's stories like no one else can – locally, authentically, and for everyone.

Together as **Wisconsin Public Media**, we reach every corner of the state through:

- **4 PBS Wisconsin channels on 6 television stations**
- **39 WPR radio stations carrying news and music**
- **8 regional WPR bureaus embedded in communities statewide**
- **Digital streaming, podcasts, and wpr.org – one of public media's top 10 websites**
- **Hundreds of community events, partnerships, and learning experiences each year**

“

**WPR and PBS Wisconsin are the only stations that I listen to or watch to get news that I trust. Especially important now.”** — *Audience Comment*

# A MESSAGE FROM OUR LEADERS

Wisconsin has led the nation in public media innovation for more than a century. Today, we write with confidence and determination, united by a shared commitment to the people and communities we serve and to Wisconsin Public Media's future.

As board and leadership partners, we are advancing a unified strategy for PBS Wisconsin and WPR, connecting radio, television, digital platforms, and community relationships so more Wisconsinites hear and see themselves in our work.

As the media landscape evolves, our mission remains clear. With your support, trusted local news, lifelong learning, inspiring music, and Wisconsin stories will remain essential. Wisconsin invented public media. We're here to stay, and together, we're building what comes next.



**Kyle LaFond,**  
*President,*  
*Friends of PBS Wisconsin*



**Roy Christianson,**  
*Chair,*  
*Wisconsin Public Radio Association*

## FRIENDS OF PBS WISCONSIN BOARD OF DIRECTORS (FY2025)

Kyle LaFond (President)  
Paula Bonner (Vice President)  
Randy Van Rooyen (Treasurer)  
Lee Caraher (Secretary, Pro Tem)  
Eric Greiling (Executive Director)  
Jon Miskowski (Ex Officio)  
Sujhey Beisser  
Tom Fisk  
Eve Galanter  
Jennifer Gauthier  
Terry Kaldhusdal  
Jen McClure (on sabbatical)  
Oscar Mireles  
Lisa O'Flyng  
Marc Perry  
Steve Plum  
Tracey Robertson  
Julie Steinert  
Martha Vukelich-Austin

## WISCONSIN PUBLIC RADIO ASSOCIATION BOARD OF DIRECTORS (FY2025)

Roy Christianson (Chair)  
Peter Lundberg (Vice Chair)  
Nicholas Abts (Treasurer)  
Pat Heim (Secretary)  
Eric Greiling (Executive Director)  
Sarah Ashworth  
(Licensee Representative)  
Tara M. Bergeson  
Niles Berman  
Miriam Brabham  
Dede Eckels  
Morna Foy  
Mai Lo Lee  
Janan Najeeb  
Mandy Roberts  
Shauna Singh Baldwin  
Kathryn Stolp  
Dean Teofilo  
Eric Tillich  
Terry Warfield  
Stacy Wigfield



PBS Wisconsin community engagement staff provide PBS KIDS learning activities during a baseball game at the Beloit Sky Carp Stadium.

# STATEWIDE REACH AT A GLANCE



**583,000+**  
**VIEWERS** PER WEEK

PBS Wisconsin  
Broadcast



**280,000+**  
**STREAMS** PER WEEK

PBS Wisconsin  
Digital Platforms



**824,000+**  
**STREAMS** PER WEEK

PBS KIDS Digital  
Platforms



**347,000+**  
**LISTENERS** PER WEEK

WPR Radio  
Broadcast



**30,000+**  
**STREAMS** PER WEEK

WPR Digital  
Platforms



**235,000+**  
**USERS** PER WEEK

wpr.org

# NEWS

## Straightforward, Accurate News You Can Trust

From eight bureaus across the state, PBS Wisconsin and WPR deliver the news that Wisconsin residents trust most.

### Rural Reporting Partnership

Many rural communities in Wisconsin face growing news deserts with limited or no local journalism. Funded by the Corporation for Public Broadcasting (CPB) prior to its defunding, our rural reporting initiative was launched to address this challenge. By building long-term capacity for our news teams, we will conduct in-depth journalistic coverage of the issues most important to our rural communities across the state.

While we continue to grow our team of journalists covering the rural beat, existing reporters expanded their focus on rural issues, supported by our eight regional bureaus. Collaboration with Wisconsin Rural Partners and University of Wisconsin-Madison Extension enabled reporters to attend community forums in Oconto, Richland, Rusk, and Dodge counties, directly shaping coverage. This foundational work is strengthening civic understanding today and building a more responsive rural journalism model for the future.

Top right: *Here & Now* reports on Wisconsin soybean farmers.



**93%**

of viewers surveyed trust *Here & Now's* news coverage

**3,600+**

news articles published on [pbswisconsin.org](http://pbswisconsin.org) and [wpr.org](http://wpr.org)

**15M+**

views of news content on our websites

**3,300+**

local newscasts aired

## Indigenous Affairs Reporter

Journalist Erica Ayisi joined PBS Wisconsin in late 2024 as part of a partnership project with ICT (formerly *Indian Country Today*) to help fill a critical gap in Indigenous news coverage in Wisconsin. Her reporting centered the priorities of Native communities – from Indigenous language revitalization to federal policy impacts on tribal health and services – fostering accurate representation and increasing visibility in statewide cultural conversations.



Above: Indigenous Affairs Reporter Erica Ayisi interviews Ho-Chunk President Jon Greendeer, pictured here, about University of Wisconsin-Madison's Tribal Educational Promise for Wisconsin's Native students.

Right: PBS Wisconsin News Director and Anchor of *Here & Now* Frederica Freyberg

## Digital News Distribution Expansion

News stories published on [pbswisconsin.org](https://pbswisconsin.org) over the year attracted more than 1.3 million views, with audience interest driven particularly by the spring 2025 election. Our news team also launched regular production of short-form vertical videos. These consist of reporter stand-ups providing summaries of *Here & Now* reports and are distributed via social media.

## Statewide Election Coverage

Our PBS Wisconsin and WPR News teams delivered trusted nonpartisan journalism throughout 2025, giving audiences the clarity and context they needed to navigate Wisconsin's civic landscape. Coverage included straightforward explanations of ballot questions, in-depth reporting on the spring election – highlighted



by the closely watched Wisconsin Supreme Court race – as well as contests for Superintendent of Public Instruction and local offices across the state. Through timely analysis, thoughtful interviews with candidates and experts, and comprehensive results coverage, our journalists helped people make sense of complex issues, understand what was at stake for their communities, and take part in civic life during a year of heightened public engagement.



**Excellent, well-researched, unbiased, factual news.”**

— Audience Comment



**WISCONSIN**  
PUBLIC RADIO

### **Wisconsin Today**

*Wisconsin Today* explores the people, places, and ideas shaping life through the open exchange of ideas and information. With a presence in Wisconsin communities across the state and a commitment to the highest standards of journalism, *Wisconsin Today* provides the clarity, depth, and connection through a daily radio show, podcast, morning newsletter, and *Wisconsin Weekend*. With depth and clarity, we help audiences stay informed and connected so Wisconsin moves forward together.

Top: WPR Photojournalist Angela Major captures Madison residents voting in the April 2025 election.

Right: WPR *Wisconsin Today* co-host Kate Archer Kent records 7-year-old Kamden Carter in Milwaukee for a story about gospel music.

### **Upper Midwest Newsroom**

WPR News joined public media partners in Minnesota, North Dakota, and South Dakota in receiving a nearly \$1.2 million grant from the Corporation for Public Broadcasting to establish the Upper Midwest Newsroom. This regional collaboration will expand local and regional

reporting, strengthen editorial capacity, and provide in-depth coverage of issues shaping life across the Upper Midwest. From tribal affairs and agriculture to economic and environmental challenges, coverage will give audiences high-quality, public service journalism on stories relevant to the region.





PBS Wisconsin Education staff and volunteers pose with PBS KIDS books and stuffed animals included in welcome backpacks for refugee children resettling in Wisconsin.

# EDUCATION

## Supporting Learners Across Wisconsin

We serve learners from early childhood through adulthood, building knowledge, creativity, inspiration, and connection statewide.

### From PBS KIDS to Lifelong Learning

For more than a century, PBS Wisconsin and WPR have brought learning to people wherever they are – at home, in classrooms, and in communities across the state. The journey begins with PBS KIDS, where playful stories and memorable characters build early learning skills that help children succeed in school and in life. That foundation continues in the classroom through PBS Wisconsin Education, supporting teachers and students with standards-aligned content designed for educational settings and professional learning that honors Wisconsin educators. From there, our work extends into adulthood through trusted journalism, music, cultural programming, and live events that invite audiences to explore new ideas and perspectives. Together, this work reflects the Wisconsin Idea in action: learning that lasts a lifetime and reaches every corner of the state.

**919,000+**

online visits engaging with PBS Wisconsin Education resources

**~5,000**

educators engaged in professional learning with PBS Wisconsin Education

**91%**

of professional learning participants surveyed say they feel “extremely” or “very” supported in their work



**As a young person who grew up watching and loving PBS, it is so wonderful to know that now, as a Youth Services Librarian, PBS Wisconsin Education is there to help me navigate new territories in providing educational resources for the next generation.”**

— Abigail Ott, Shorewood Public Library

## **PBS Wisconsin Education**

Education is central to our mission. PBS Wisconsin Education supports early learners through PBS KIDS resources for families and childcare settings, then builds on that foundation with free, standards-aligned media and professional learning for educators and students across classrooms, libraries, and virtual learning environments.

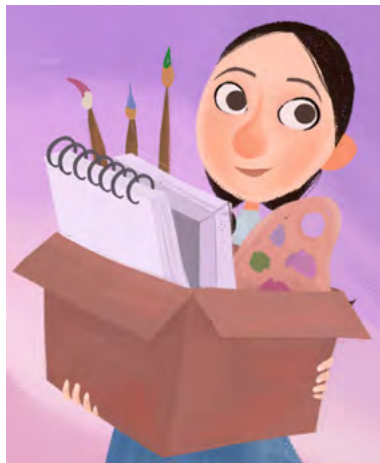
### ***The Look Back: America@250***

PBS Wisconsin Education's *The Look Back* is a series developed for students in grades 4-6, exploring Wisconsin's historical eras through artifacts. With support from PBS LearningMedia and the Kern Family Foundation, two new *The Look Back* episodes explore Revolutionary-era stories through a local lens as part of the broader America@250 initiative (see

Top right: Animation of American modernist artist, Georgia O'Keeffe, from PBS Wisconsin Education's *Wisconsin Biographies*

Bottom right: In *Whoopensocker*, students build storytelling skills through engaging, theater-based activities.

p. 13). The episodes focus on two key Revolutionary artifacts – a British peace medal given to a Menominee Chief in 1778 and a portrait of George Washington.



### ***Wisconsin Biographies: Georgia O'Keeffe***

PBS Wisconsin Education's popular *Wisconsin Biographies* series designed for grades 3-6 shares the stories of people who made Wisconsin history. Wisconsin native Georgia O'Keeffe joined the collection this year. Known for her paintings of flowers, buildings, bones, and landscapes, her story models determination and creativity. O'Keeffe not only changed American art but also showed future generations that it is possible to succeed by staying true to your vision.

## ***Whoopensocker***

PBS Wisconsin Education launched *Whoopensocker*, an educational resource collection for upper elementary learners that provides an on-ramp to writing through theater-inspired games and group brainstorming.

*Whoopensocker* was first developed as a six-week teaching artist residency by Erica Halverson, a professor at the University of Wisconsin-Madison School of Education. Halverson teamed up with PBS Wisconsin Education to make a multimedia version of the program that's accessible to educators around the state.





### WPR News & Music

WPR’s news, music, conversation, and entertainment programs support lifelong learning by helping audiences explore ideas, culture, and civic life well beyond their school years. Reaching listeners across Wisconsin and around the world on 39 stations and two networks – WPR News and WPR Music – we inform and inspire audiences through trusted journalism and cultural programming grounded in the open exchange of ideas.

### The Larry Meiller Show

*The Larry Meiller Show* has been a staple on WPR since 1967 and is among our most



listened-to programs. The live weekday call-in show connects Wisconsinites through thoughtful conversation on topics that shape everyday life, from gardening and the environment to home improvement, consumer issues, and local issues. Larry and his hundreds of annual guests and callers create a welcoming space for curiosity, connection, and trusted advice. In 2025, we celebrated Larry’s remarkable career as he announced his upcoming retirement after 58

years with WPR, honoring his lasting impact on generations of listeners.

### Chapter A Day

One of WPR’s most popular programs, *Chapter A Day*, has been part of our programming since 1931, sharing daily readings from classic and contemporary books. The program invites audiences to slow down and savor one chapter at a time, read aloud by a rotating cast of skilled narrators. With its steady presence across decades, *Chapter A Day* continues as a quiet, enduring tradition for generations of Wisconsin listeners.

Above: Larry Meiller greets audience members after a live broadcast of *The Larry Meiller Show* on location at Seven Acre Dairy in Paoli.

Below: Members of the Wisconsin Youth Symphony Orchestra’s advanced ensembles perform on WPR’s *Midday Classics* with Norman Gilliland.



**The Larry Meiller Show has brought wisdom, tools, and joy to me for many years. Thanks for the fascinating and meaningful programming.”**

— Audience Comment

THE AMERICAN REVOLUTION screening event at the AL. Ringling Theatre in Baraboo



# EVENTS & ENGAGEMENT

## Where Communities Connect and Belong

PBS Wisconsin and WPR bring our content to life through community events statewide, bringing people together to connect, engage, celebrate, and learn.

### America@250

In advance of America's 250th anniversary, PBS Wisconsin and WPR engaged communities across the state in meaningful conversations about history, democracy, and civic life through the America@250 initiative (A@250).

With support from WETA, A@250 features national PBS programming, including THE AMERICAN REVOLUTION, a six-part documentary directed by Ken Burns, Sarah Botstein, and David Schmidt that explores the nation's founding struggle. The initiative also includes locally produced PBS Wisconsin resources, including educational resources and a statewide educator institute supported by PBS LearningMedia.

The initiative launched with a major community screening of THE AMERICAN REVOLUTION at the historic AL. Ringling Theatre in Baraboo, drawing more than 325 participants, and the announcement of 25 mini-grants for A@250 Community Conversations. In 2026, these efforts will be activated through locally led community events supported by those mini-grants, alongside the distribution of conversation guides and clips as well as facilitation training.

**44,000+**  
event attendees at

**200+**  
events hosted  
across the state in

**65**  
communities

**4M+**  
engagements on  
social media

Funder credit: Corporate funding for THE AMERICAN REVOLUTION was provided by Bank of America. Major funding was provided by The Better Angels Society and its members Jeannie and Jonathan Lavine with the Crimson Lion Foundation; and the Blavatnik Family Foundation. Major funding was also provided by David M. Rubenstein; The Robert D. and Patricia E. Kern Family Foundation; Lilly Endowment Inc.; and the following Better Angels Society members: Eric and Wendy Schmidt; Stephen A. Schwarzman; and Kenneth C. Griffin with Griffin Catalyst. Additional support for THE AMERICAN REVOLUTION was provided by: The Arthur Vining Davis Foundations; The Pew Charitable Trusts; Gilbert S. Omenn and Martha A. Darling; Park Foundation; and the following Better Angels Society members: Gilchrist and Amy Berg; Perry and Donna Galkin; The Michelson Foundation; Jacqueline B. Mars; Kissick Family Foundation; Diane and Hal Brierley; John H. N. Fisher and Jennifer Caldwell; John and Catherine Debs; The Fullerton Family Charitable Fund; Philip I. Kent; Gail Elden; Deborah and Jon Dawson; David and Susan Kreisman; The McCloskey Family Charitable Trust; Becky and Jim Morgan; Carol and Ned Spieker; Mark A. Tracy; and Paul and Shelley Whyte. THE AMERICAN REVOLUTION was made possible, in part, with support from the Corporation for Public Broadcasting.



## PBS Wisconsin

### Garden & Green Living Expo

PBS Wisconsin continued its tradition of bringing people together through two of the state's signature expos. Celebrating its 33rd year, the Garden & Green Living Expo welcomed nearly 13,000 attendees for three days of free educational presentations, hands-on learning, and inspiration around gardening, local foods, and sustainability.

### Great Wisconsin Quilt Show

The 21st-annual Great Wisconsin Quilt Show drew more than 18,200 attendees and showcased more than 650 quilts. Through the Quilt to Give service project, participants created and donated more than 100 quilts

Top: Participants in the Great Wisconsin Quilt Show first annual fashion show. *Dynae Alice Photography*

Right: Interviewing an attendee at the screening event of the Independent Lens film *We Want the Funk!*

to support refugee children resettling across Wisconsin.

### Funk It Up with PBS Wisconsin

Supported by ITVS, this event transformed a preview of the Independent Lens film *We Want the Funk!* into a vibrant community celebration of Black culture, music, and history in Madison. Through partnerships with local artists and dancers, the free event and connected social media campaign engaged new audiences and reinforced public media's role as a welcoming cultural convener.

### Latinx History Series

PBS Wisconsin and the Wisconsin Latinx History Collective partnered to share the diverse histories of two Latinx families across the state in a digital video series, which had more than 100,000 impressions across social media platforms. Supported by Latino Public

Broadcasting and the Corporation for Public Broadcasting, the series spotlighted stories of migration, tradition, community leadership, and cultural identity, inviting audiences to see Wisconsin history in a broader, more inclusive light.



### University Place Live Recording & Simulcast

PBS Wisconsin collaborated with the WPR bureau in Superior to expand access to scholarship with a live, two-location recording and simulcast of *University Place*. Dr. Katrina Phillips discussed Red Cliff Ojibwe history while audiences in Madison and Superior participated together, demonstrating new ways public media can connect communities statewide.



## Classical Music Day

The Second Annual WPR Classical Music Day drew nearly 500 people to Milwaukee’s Bradley Symphony Center in October. As part of WPR’s partnership with the Milwaukee Symphony Orchestra, the event showcased over 160 young musicians from southeastern Wisconsin. *Drivetime Classics* host Jason Heilman guided the audience through performances by student ensembles on the historic stage. The concert was recorded and broadcast statewide in February 2026.



Top right: Celebrating youth musicians at Classical Music Day in Milwaukee

Above: A member of North Wind Ensemble plays at a Pint-Sized Concert at Rhinelander Brewing.

Right: Bach to Pop Strings performs a Pint-Sized Concert at Honest Dog Books in Bayfield.

## Pint-Sized Concert Series

WPR partners with the Milwaukee Art Museum to feature WPR’s Pint-Sized Concerts at its popular “Thursday Nights at MAM” series, expanding our reach to new and younger audiences. Launched in early 2025, Pint-Sized Concerts highlight local musicians in local venues, blending classical music with familiar favorites and underscoring how WPR can support and enrich cultural life in local communities.

## Wisconsin Road Trip Live in Appleton

To celebrate WPR News’ Summer Road Trip Series, we gathered the community at Poplar Hall in Appleton in August. WPR’s Bridgit Bowden hosted a lively conversation with more than

100 attendees sharing stories and connecting around Northeast Wisconsin travel.

## Leader in Digital Engagement

WPR’s website is among the top ten most-visited public radio websites, with more than 235,000 weekly active users. This is higher than many sites in larger markets, including WNYC in New York and WBEZ in Chicago. In May 2025, the daily WPR News email newsletter shifted to curated editorial content, and subscriptions have increased 40 percent to more than 13,700.





PBS Wisconsin *Wisconsin Life* host Angela Fitzgerald tours the grounds of Frank Lloyd Wright's Taliesin.

# ARTS, CULTURE & WISCONSIN VOICES

## Celebrating Creativity and Connection

We showcase music, arts, and storytelling that honor Wisconsin voices, foster creativity, and bring communities together through performances, conversations, and stories in place.

### *Wisconsin Life*

A collaboration between PBS Wisconsin and WPR, *Wisconsin Life* entered its 12th season, continuing to celebrate the people, places, and cultures that make Wisconsin unique. The series traveled across the state to share stories of creativity, history, nature, and community – from Wisconsin's oldest state park in St. Croix Falls to iconic destinations like Frank Lloyd Wright's Taliesin, whimsical Bookworm Gardens, and more. New episodes premiered on PBS Wisconsin and WPR and streamed weekly, offering viewers a richly textured portrait of life in Wisconsin that deepens connection and understanding statewide.

**94%**

overall quality rating by audiences surveyed for PBS Wisconsin-made programs

**4,000+**

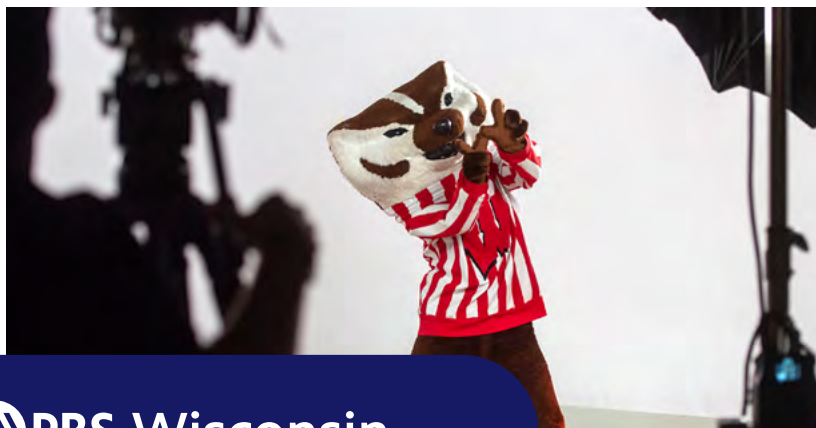
hours delivered of locally-produced PBS Wisconsin and WPR News & Talk programming

**1,000+**

local artists featured on WPR Music

**150+**

Wisconsinites' unique stories featured on *Wisconsin Life*



### ***Powwow Bound: A Menominee Homecoming***

Co-produced by PBS Wisconsin and Nebraska Public Media, *Powwow Bound: A Menominee Homecoming* offers a 3D narrative-driven adventure into Menominee culture. Players guide teenager “DJ” through the annual contest powwow, helping her family honor their ancestors. Developed with extensive Menominee representation, the game provides an authentic, immersive way for students and the public to experience contemporary Indigenous traditions and storytelling.

### ***Bucky!***

*Bucky!* whimsically explores the history of Bucky Badger, his cultural impact on Wisconsin, and his rise to something larger than just a

mascot. Narrated by comedian Charlie Berens, Bucky’s story is told through interviews by those who donned the Bucky costume, the families of his creators, and incredible footage from the past that has not been seen publicly in decades. Through screenings and preview events, more than 1,150 people gathered in theaters, community spaces, alumni venues, and senior living communities to experience the documentary together.

### ***Welcome Poets***

PBS Wisconsin’s limited digital series *Welcome Poets* explores the lives, work, and legacies of two Wisconsin poets with strong ties to Fort Atkinson. In the series’ six episodes, the life and work of the late poet Lorine Niedecker are celebrated through the personal

reflections of 2023-2024 Wisconsin Poet Laureate Nicholas Gulig as he examines the people, places, and influences that have shaped his own life as a poet.

### **La Crosse Symphony Orchestra’s Midnight in Paris**

PBS Wisconsin and WPR partnered to record the La Crosse Symphony Orchestra’s “Midnight in Paris” concert. Featuring acclaimed violinist Rachel Barton Pine and Maestro Alexander Platt, the production captured the season finale at the Viterbo Fine Arts Center. This collaboration preserved a significant cultural moment, making the performance accessible to audiences beyond the concert hall.



Top: Bucky Badger takes center stage in the PBS Wisconsin documentary, *Bucky!*

Above: Former Wisconsin Poet Laureate Nicholas Gulig in *Welcome Poets*



**WISCONSIN  
PUBLIC RADIO**

### ***To the Best of Our Knowledge***

As *To the Best of Our Knowledge* completed its 35-year run in fall 2025, the American Archive of Public Broadcasting announced that the complete archives of the Peabody Award-winning program will be preserved. The collection is now available online through the national archive, which is a collaboration of the Library of Congress and GBH.

### ***Zorba Paster On Your Health***

In 2025, we also aired the final episode of *Zorba Paster On Your Health*. The nationally-syndicated show, featuring Dr. Zorba Paster sharing health and fitness

Above: *Midday Classics* host Norman Gilliland welcomes musicians from the Wisconsin Youth Symphony Orchestra for a live performance.

advice, concluded its 33-year run in September. Dr. Zorba Paster will continue to be a guest on other WPR programs.

### **WPR Classical Music**

*Midday Classics* features in-studio musician visits and interviews; *Wisconsin Classical* highlights weekly performances by Wisconsin ensembles and soloists; and *Classics By Request* fills Saturday mornings with listener-curated selections and themed shows.

### ***The Road to Higher Ground***

On this weekly program, host and producer Dr. Jonathan Øverby explores music as a gateway to understanding cultures worldwide. Drawing on years of travel, research, and collaboration with musicians across continents, the program offers an inclusive listening experience featuring music that is ancient and modern, local and global, familiar and newly discovered.

### ***Simply Folk***

*Simply Folk* is WPR's weekly folk music program featuring traditional and contemporary Americana, bluegrass, acoustic blues, Celtic, Nordic, and related styles. Hosted by Síle Shigley, the show also highlights Wisconsin artists and listener selections.



**WPR Music is as great as it gets. I've always had classical music in my life and searched for the most eclectic and excellent in classical radio. So impressed!"**

— WPR Music listener from Eau Claire

# 2025 AWARDS & RECOGNITION

## PBS WISCONSIN HIGHLIGHTS

PBS Wisconsin earned multiple industry awards recognizing the impact of its visual storytelling and public-service journalism. Notably, the station received the National Educational Telecommunications Association's Overall Excellence in Innovation award at the 57th Public Media Awards. Additional honors celebrated documentaries on Wisconsin's history and places, in-depth *Here & Now* reporting, and *Wisconsin Life* features highlighting local culture, communities, and small businesses.



## WPR HIGHLIGHTS

In 2025, WPR received numerous industry awards recognizing journalism produced in 2024 that combined deep reporting with strong storytelling. Honored work ranged from thoughtful examinations of Wisconsin communities in transition to compelling historical and science-based features, as well as intimate reporting on mental health and family life. Together, the awards reflect WPR's commitment to nuanced, human-centered journalism across all our platforms.

**A full list of both PBS Wisconsin and WPR awards won are available at [wpr.org/awards](https://wpr.org/awards)**

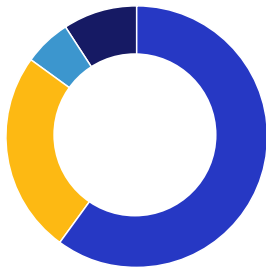
# FINANCIAL SNAPSHOT

## Fiscal Year 2025 (July 1, 2024-June 30, 2025)

The loss of federal funding following the defunding of the CPB presents a significant challenge, resulting in a \$6 million annual reduction for PBS Wisconsin and WPR beginning in Fiscal Year 2026 (not reflected in these charts). In response, members across both services have stepped up, reaching an all-time high in contributors of nearly 130,000.

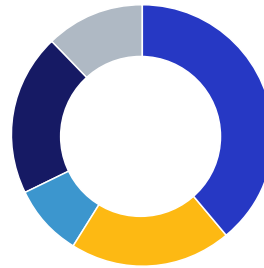
In Fiscal Year 2025, strong financial outcomes were driven by impressive fundraising results and rigorous fiscal management. Both Friends of PBS Wisconsin and the Wisconsin Public Radio Association (WPRRA) experienced significant increases in contributions and membership growth. Nearly 70 percent of every dollar raised supports programming, broadcast, and educational and community outreach services. With combined endowment\* payments totaling more than \$1.3 million in FY2025, together we can ensure the long-term sustainability of the valuable services we provide to Wisconsin.

### Revenue Sources



- Corporation for Public Broadcasting 9%
- Community Support 60%
- State Support 25%
- Other 6%

### Expenses



- Programming & Production 39%
- Broadcasting 20%
- Program Information 9%
- Fundraising 20%
- Administration 12%

\*Endowment payments to PBS Wisconsin, WPR, and Wisconsin Public Broadcasting Foundation

\*\*Elimination of federal CPB funding will be reflected in FY2026 financials.

**Your support keeps public media strong and accessible for everyone.**

For detailed financial information, please visit [pbswisconsin.org/financials](https://pbswisconsin.org/financials) and [wpr.org/financials](https://wpr.org/financials).

# THANK YOU

We are honored to acknowledge the nearly 130,000 donors who supported PBS Wisconsin and WPR during the 2025 fiscal year. The following pages highlight leadership donors and businesses who made gifts to support our daily work, funded special projects, or designated future gifts to grow our endowment.



● = Donor to both PBS Wisconsin and WPR in FY25

## \$1,000,000+ Lifetime Giving

Monroe E. & Sandra L. Trout  
Wooden Nickel Fund

**Leadership Circles**  
*The Executive Producers Circle and Producers Circle recognize those at our highest levels of philanthropy. We also gratefully honor those in the Directors Circle, whose annual gifts of \$1,000 or more elevate our mission.*

## \$25,000-\$999,999

- Dr. Henry A. Anderson
- Dr. Annette Beyer-Mears in memory of Howard & Nelle Weiss
- Lau & Bea Christensen  
C.L.M. Park Foundation & Lois J. Brager  
A.C.V. & Mary Elston Family  
The Fidler Family in memory of Dean Fidler  
W. Jerome Frautschi & Pleasant T. Rowland
- Virginia Graves & Peter Tropman  
Barbara Hoffman  
JEK Foundation Inc.
- Robert J. Lenz  
Chuck & Barb Merry
- Mary E. Nikolay  
William & Priscilla Oswald
- Mary & Lowell Peterson
- Pat Powers & Tom Wolfe
- Roots & Wings Foundation
- Mary Lang Sollinger  
Paul & Coe Williams  
Anonymous (4)

## \$10,000-\$24,999

- Fernando & Carla Alvarado
- Rima D. & Michael Apple
  - Francis A. & Georgia F. Ariens Fund  
Diane Ballweg  
Bitzer Family Legacy Fund
  - Catherine Bloomer  
Sandy Bobrowitz  
Lynn S. & Charles M. Brown
  - Charles & Ann Cedergren
  - Richard & Nancy Christiansen  
Clan Donald Pipes & Drums of Northeast Wisconsin
  - Joyce Clark Knutson
  - Robert & Mary Cole  
Geoffrey Crowley & Kelly Lanpheer-Crowley  
Culver's Foundation
  - John & Katherine Davis
  - Dick & Judy Ela
  - Ed & Jeanne Eloranta  
Diane Elson
  - Jean E. Espenshade  
Evjue Foundation  
John J. Frautschi Family Foundation
  - Gary D. Gill  
Colleen Goggins  
Mary T. Grace in memory of Barbara Ann Filip
  - John & Alice Grady  
Greg & Carol Griffin  
Marjorie J. Hansen
  - Marilyn Hansotia
  - Charles & Judy Hastert  
KB Charitable Trust
  - Deborah Keller  
Jean G. Kidwell in memory of Ben J. & John A. Kidwell
  - Cindy Koschmann in memory of Edward G. Mason

- Jennifer & William Kraemer
- Sandra & Thomas Lothar  
Nancy Madisen in honor of Erik Madisen Jr.
  - Julie & Larry Midtbo
  - Shelley M. Moffatt  
Jim & Monica O'Brien  
Ruth Ann Potts
  - Leon Price & Lily Postel  
Jonathan G. Rooney  
Beverly A. Schmidt
  - Drs. Ron & Molly Shiffler  
Thomas Terry
  - Roger & Lynn Van Vreede  
Yvonne Vesely in memory of Rudy Vesely  
Brian Wegner & Cynthia Landes
  - Rebecca Wiegand & Marvin VanKekerix  
Al & Judy Wittenkeller Trust  
Anonymous (9)

## \$2,500-\$9,999

- Sherrie Albrecht & Roger Kim  
Ron & Patty Anderson  
Jim Angevine  
Waltraud Arts  
William Baker  
Jill Storms Ball  
Tom & Sally Basting  
Keith & Sue Baumgartner
- Ed & Jackie Belka  
Donald Benson  
Penny Benson
  - Niles & Linda Berman  
Dale & Linda Bernhardt  
Linda K. Betsinger  
Lauri Bickel
  - Betty Bienash  
Dale & Nanci Bjorling  
Rosemarie Blancke

- Linda Bleser  
Richard & Lee Bloemke
- Randy & Marcia Blumer  
Jan Botz & Tom Lippert  
Patricia Brady & Robert Smith  
Barbara Breese  
Irene Brierley  
Rick Britton  
Bonnie & Paul Brown
  - Robert W. & Susan T. Brown  
Linda Buckelew Family Charitable Fund  
Mary P. Burke  
Kathleen M. & Martin E. Burkhardt  
David & Vonnie Callsen  
Sally & Chris Candee
  - Douglas & Sherry Caves  
Jean-Paul & Eloisa Chavas  
Jean Cherney  
Jennifer Choi  
Jeanne A. Clark
  - Chris & John Coffin
  - Dr. Marcus & Mrs. Sheila Cohen  
David Cramer
  - Cummings Christensen Family Foundation
  - Joan Daniels Pedro  
Dave's Party Fund - Live, Love, Laugh  
DeAtley Family Foundation  
Carol L. Delaney  
Susan Denholm  
Harold & Elizabeth Dettinger  
Cal & Ruth DeWitt
  - Becky Dick
  - Dean & C. Ann Dietrich
  - Carl & Barb Drake  
Don & Jean Drewiske
  - Janis P. Edwards  
Dr. Sharon S. Ehrmeyer  
Kathleen Engebretsen

- Laurie & Robert Erickson
- Shirley Erickson
- Mary Erikson
- Jan & Jackie Erlandson
- Marty & Theresa Evanson
- Jay Everard & Paula Devroy-Everard
- James & Mary Fico
- Donald & Barbara Frank
- Doris & Steven J. Frank
- Ron & Marianne Fritsch
- Joseph M. Fritz & Cynthia M. Bender
- Bruce & Grace Frudden
- Eve & Marc Galanter
- Richard & Roberta Gale
- Jessica A. Garratt
- Bob & Sharon Gilson
- Karen L. Godshall
- Jerry & Jody Goldberg
- Nancy J Goldberg
- James Golz
- Dennis Gosse
- Anne & Larry Graham
- Nancy Graham
- Joel & Jacquelynn Greiner
- Craig & Ruth Gundermann
- Tamara Hagen
- Robert K. Halloin
- Hamilton Family Foundation
- Bill Hansen & Diane Gorychka
- John & Diana Haverberg
- Ed Hechmann
- Kay Heggstad, MD & Paul Wertsch, MD
- Liz & Terry Heinrichs Family
- Bill Henke
- Gary Hetzer & Marcia Tepp
- Margaret Hickman
- Robert A. & Jan A. Hirschy
- Mike & Charlene Holler
- Julie Holly
- Todd & Lin Huffman
- Mark & Sally Hunner
- Dale & Winnie Hutjens
- Karen & John Icke
- Barbara Ingham
- Sandra Jacobee
- Pauline Jauquet
- Kathleen M. Jeffords
- David H. Jones & Pat P. Noordsij
- Don & Tina Kalscheur
- Kalscheur Family Foundation
- Janet & Michael Kane
- Dave Keppert
- Shirley Klapperich & William Clendenning
- Robert J. & Mary L. Klein

- Brian & Amy Kobishop
- Marion D. Kobow
- Laura Kohler & Stephen C. Proudman
- Alfred H. & June E. Kohlwey Foundation
- David & Paula Kraemer Fund
- Fritz Kruger & Kathy Lawler
- James Krumbein
- Byron J. & Cheryl Kruschke
- Roberta Kurtz
- Mae J. Laatsch
- Deanna & Allen Larson
- Lynn & Dick Lawson
- David R. & Darlene A. Lee
- Roma Lenahan
- Patricia A. Lenz
- Vic & Sue Levy
- Barbara K. Liles
- Chun C. Lin
- Donna & David Lindert
- Barb & Bob Luedtke
- Richard & Catherine Luxton
- Stewart Macaulay in memory of Jackie Macaulay
- Marlene Mack
- Barb & Mike Madden
- Helen & Ernest Madsen
- Norma & Doug Madsen
- Paul & Sheila Manley
- Leota E. Mann
- Lee Marquardt
- Robert Mathieu & Margaret Brauer
- Marlynn May
- John & Valerie McAuliffe
- Jennifer McClure
- Dave McCormick & Virginia Bores
- McCoy Family Trust
- Kathleen K. McFeeley & David Kinyon
- Ronald & Shirley Meddaugh
- John & Linda Merrill
- Donald & Mary Metz
- Dennis & Patricia Meyer
- Donald Meyer
- Ann Michalski
- John C. & Katherine Miller
- Wayne & Barbara Mohr
- Robert Molitor & Joan Sommers
- Stephen D. Morton
- Sara Mueller
- Stella Muller
- David & Deborah Myren
- Geri Naymick
- Beth Neary
- David & Mary Neuhaus
- Leo & Sue Nickasch

- Robert M. & Carol Niendorf
- Linda D. Nolten
- Rodney Nordby & Nancy Anderson
- Valerie Nygaard
- Edward J. Okray Foundation
- Kurt & Louise Olson
- Sandra & John O'Malley
- Susan J. O'Neill
- Leland O. Otte
- Stacy & Ismael Ozanne
- Dr. Zorba & Penny Paster
- Wayne & Lynn Peotter
- Kato L. Perlman
- Bruce Peters
- Sandra Pfahler
- L.E. Phillips Family Foundation
- Phillip & Linda Pionkowski
- Maureen & William Plzak
- Robert & Kathleen Poi
- Linda & Rex Pope
- Mary B. Rae
- Don & Roz Rahn
- Ed & Judy Ramsey
- Peter Rasmussen
- Gerald & Mary Reinhard
- Terry & Laura Rettke
- Sylvia T. Richards
- Susan G. Ring & Jerome L. Mooney
- Louise Robbins
- Janet B. Robertson
- Barbara L. Rohan & Gerald Bublitz
- Carrie Lynn Ryan
- Ann & Kristene Sager
- Ann & Tim Salut
- Cheryl Sampe Braun
- Sonya Sauer in memory of Robert L. Sauer
- Rob & Mary Savage
- William J. & Barbara A. Schmidt
- Family Foundation
- Katherine Schoonmaker
- Nancy E. Schraufnagel
- Kurt & Julie Schroeder
- Robert Schuning & Mary Ellen Stewart, Fairhope, Ala.
- Gary Schwager & Dr. Gabrielle Banick
- Jeri Sebo
- Jan Seiler
- Cynthia & David Shaw
- Julie & Bill Shippee
- Dorothy J. Sivam
- Diana Slater
- Jim Slattery
- Katie Smith
- Ardath K. Solsrud
- Gary & Teresa Sommers

- Gregory Spoehr
- Gene Sprecher
- Jim & Jan Spredemann
- Barb Stanek
- David & Denise Statz
- Mary L. Staudenmaier
- Lori Stoneking
- Elaine B. Strassburg
- George B. Strother & Mary G. Benes
- Jane Taylor Coleman
- Catherine & George Tesar
- James & Anne Thomas
- Pat & Janet Thompson
- Sharon & Tim Thousand
- Maureen Torphy
- Richard & Carol Valley
- Dave & Joyce VanGompel
- Marjorie Van Handel
- VanKerkhoven Family Fund
- Steven Vedro & Beverly Gordon
- Gaida K. & Robert L. Vickerman
- Jeff & Marty Virchow
- Martha & Kenneth von Kluck
- Lila Waldman
- Cliff & Betty Wall
- Terry & Mary Warfield
- W. Scott Weigle
- Peter & Lynne Weil
- Charles & Christine Wellington
- David Wenninger & Gale Fisher
- Patricia Wilde
- Keith & Diane Wilson
- Michael Wolff & Berni Mattsson
- Carole Wood
- Mary Ann Woodke
- Suzanne L. Young
- Mary Zaborski
- Richard & Karen Ziegert
- Michael Zielinski
- Anonymous (56)

### Heritage Society

*The Heritage Society recognizes extraordinary individuals who remember PBS Wisconsin with a gift in their estate plans.*

*Their foresight ensures public media continues its legacy for generations to come.*

- Tim & Sara Abel
- Richard & Barbara Albrecht
- Sherrie Albrecht & Roger Kim
- Cheryl Allen
- Annie Allen-Wyman
- Jake & Lucy Altwegg
- Mary Ames

Keith Amundson & Theresa Galligan-Amundson  
 Ron & Lois Anderson  
 Ron & Patty Anderson  
 Claire Andrews

- Michael W. & Rima D. Apple
- Brenda Armstrong
- Philip & Carolyn Ashby
- Ronald & Kathryn Babbitz Trust
- Alan & Pauline Babler
- Gary Baginski
- Christopher & Christine Barden
- John F. Barker
- Tom & Sally Basting
- Carol Batho
- Pat Behling & Ginger Anderle
- Chester Behnke
- Larry & Kathy Bell
- Barry Bender
- Robert Bennicoff
- Todd I. & Betty J. Berens
- Sandra Berg
- Barbara Bergsma
- Rebecca G. Berquam
- Linda K. Betsinger
- Barbara L. Beutler
- Sherrie Beyer & Wayne Ott
- Joseph & Patricia Biebl
- Thomas Biermann
- John Biondi, Jr. & Deirdre Birmingham
- James & Gloria Bjornerud
- Vlasta Karol Blaha
- Alan E. & Karen L. Bodden
- Debra S. Boerson
- Poodie & Clay Bonin
- Jan Botz & Tom Lippert
- Bill Bourland
- Terry Boyd
- Laurel & JoAnn Brandt
- Cheryl Braun
- Julia M. Vanroo Bresnahan
- Malcolm & Penny Brett
- Michael K. Bridgeman
- Trish Brodd
- Peggy Bronsberg & Bernie Langreck
- Dr. Jeffrey F. & Kristen J. Brown
- Jane Bruesch & Rich Propsom
- Sue & Jim Buck
- James A. Bullock
- Merlyn Burkard & Linda Benaszkeski
- Jennifer Buxton & Dennis Appleton
- William Floyd Cairns
- Helena Campbell & Craig Cullum
- Colleen M. Cantlon & James L. Greenwald

Kathy Casberg  
 Jean Cherney

- Jim Christenson
- Phyllis A. Christie
- Rebecca Lynn Cleveland
- Susan H. Colliton
- Laura Cominetti & Steve Richter
- Terry & Amy Coughlin
- Kay M. Cowing
- Karen & Philip Crawford
- Jennifer Cuccia
- Jean Dahlstrom
- Kathy Daily
- Kevin S. Dalka
- Lowell G. & Donna Dalsoren
- Income Trust
- Richard H. Damro
- Dave & Amber Dapkus
- Art, Irma & Gary Davis
- Merle & Eve Davis
- Sandra L. Davis
- Nancy J. Deer
- Dr. Donald Delebo
- Matthew DeMars
- Steven & Valrie Demuth
- Richard & Nancy Dietz
- Carol Theresa Dill
- Mary Ellen Doll
- Greg & MaryAnn Dombrowski
- Judy & Doug Drew
- Cori & Dave Drexler
- Joshua R. Dukelow
- Catherine M. DuPont
- Heidi Dybing
- Dr. Sharon S. Ehrmeyer
- Susan & Arpad Eiler
- Roy & Stephanie Elkins
- Sheldon Ellestad
- Rita & Ed Emmenegger
- M. Virginia Epps
- Theodore Eslinger
- Jean Espenshade
- Linda Fariss
- Mary 'Farmi' Farmiloe
- Lorrie Jane Feeney
- Colleen & Bill Feist
- Kathleen K. Fenske
- Alice L. Ferris
- Shawn R. Fischer
- F.M. "Mike" Fitzpatrick
- Charles & Susan Flaker-Johnson
- Mary C. Ford
- Bryan & Nicole Frazier
- Jim & Pat French
- Jeffrey & Sara Frenette Trust
- Keli & Andrew Frigo
- E. Chloe Gaalswyk
- Dean & Mary Gagnon

- Eve & Marc Galanter
- Janice Galt
- Russell & Suzanne Gardner
- Jack Garrett
- James Gelandner
- Dave George
- Nora Gerber
- Chet & Barbara Gerlach
- Lloyd R. & Dorothy J. Gerrits
- Susan Gerstner
- Diane L. Glodoski
- Jeff Glover
- Eric & Ann Marie Godfrey
- Carl & Lana Goepfert
- Nancy J. Goldberg & James L. Hoehn, MD
- Steve T. & Mary Gonske
- John & Alice Grady
- Dave & Joanne Grandkoski
- Joel & Jacquelynn Greiner
- Frank Grenzow
- The Greg & Carol Griffin Family
- Scott & Celia Groff
- Gerard & Linda Grzyb
- Douglas & Barbara Gunz
- Jane E. Haasch
- Tamara Sue Hagen
- Bob Halaska
- Camille Haney
- Bill Hansen & Diane Gorychka
- Ellen Hansen
- Roger W. Hansen
- Marilyn Hansotia
- Kris Harings & John Tipton
- Carol Harke
- Judy & John Hartl
- Ira J. Hartoch
- Charles & Judy Hastert
- Joan D. Hauer
- Peter F. Hauptmann
- David Haven Family
- Karen G. Havholm & Glenn I. Reynolds
- Ron & Carol Hay
- Janet J. Hays
- John & Mary Jeanne Hecht
- Susan Hedman
- Dale & Becky Heiking
- Joe & Pat Heim
- Shelley Anne Hein
- John Heinrichs
- Rev. Daniel & Lynn Henderson
- William W. & Patricia R. Henke
- June Hesler
- Peggy Hill-Breunig
- Bryce Hinsch
- Jack & Colleen Holmbeck
- Gift Fund

- Steve & Jane Holtzman
- Jeanette Holz
- Nancy J. Homburg
- Barb & Mike Homolka
- Barbara A. & John R. Horner-Ibler
- David Hough
- Allan & Isabel Hubbard Foundation
- Vicki Huffman & Alan Knight
- Lynn Huiskamp
- S. K. Humblet
- Johnny J. Hurtado
- Dale & Winnie Hutjens
- Carolyn P. Jacobson
- Jerome J. Jagielski
- Marilyn Jahnke
- Richard T. Jakubek
- Jeff & Kathy Jaschinski
- Carol Jegen & Frank Rippl
- Norman & Nancy Jensen
- Susan C. Jensen
- Earl & Carol Jewett
- David John Jindra
- Tom & Margie Johnson
- Lila M. Jones
- Barbara & William Kelly
- Darcia Keplin
- Melissa A. Keyes & Ingrid E. Rothe
- Barbara & Ron King
- Suzanne Kinyon
- Kris Knoepke
- Joyce Clark Knutson
- William & Debbie Knutson
- Karl & Kathy Kobal
- Amy Kocho
- Linda & Kiff Kohut
- Mary M. & Scott A. Kolar
- Jerry & Michael Koleske-Nitz
- Robert A. Koriath
- Walter Koskinen
- Michael Kraft & Sandra Simpson-Kraft
- J.A. Krause
- Richard J. Krause
- Richard F. Kreuziger
- Paul M. Kronberg
- Janet L. Krucky & James A. Johnson
- Larry Krueger
- Byron & Cheryl Kruschke
- Donald Kubichek
- Daniel & Colleen Kutchin
- Mae J. Laatsch
- Kyle LaFond
- John & Marie LaFontaine
- Bob & Mary Jane Lake
- Mariapia Lambert
- Mary & Robert Lane

- Dale & Angie Lang
- Frank J. LaPin  
Mary T. Lasecki
- Gary Lautenschlaeger  
David R. & Darlene A. Lee
- Sarah Elizabeth Leet  
Robert J. Lenz  
Rich & Beth Lepping  
Barbara L. Leuthner  
Robert & Dana Lex  
Barbara Liles  
Mary Linders  
Rick & Joyce Lohr  
J. D. Losenegger  
Donna Lotzer  
Louise Luedtke  
Michael Luedke  
Steven & Opie Lundey
- Dr. Eric & Julie Lyerla  
Barb & Mike Madden  
Yoshiko Madson  
Maija Maki-Laurila  
Richard Malinowski  
Nell Mally  
David & Carol Marquardt
- William & Bernadette Marschke  
Dennis W. & Mary J. Martin  
Famia Marx
- DeAnne Massey  
Deborah J. & Dennis J. Mathson  
Constance Matusiak  
Douglas & Martha Maxwell
- Family Fund  
Cynthia Lou May
- Karen McCarty  
J.E. McClure Family Trust  
LaVonne McCombie  
Frederick & Virginia McCormick  
Mary McEniry
- Wayne & Nan McGhee  
Susan McIntyre
- Thomas & Nancy McVary  
Jeff & Lynn Meinders  
Bob & Stacy Merrick  
Chuck & Barb Merry  
Rose M. Messina  
Jean Michaels  
William & Janice Minardi
- Margaret Misdall  
Patrick & Sara Mitchell  
Jamie Ann Moar
- Noreen Moen  
Nancy Newell Moore  
Morgan's Shoes  
Mel Morgenbesser  
Ray Mosey  
Della M. Mudry  
Norman & Peg Munson
- Richard & Martha Nawratil
- Geri Naymick  
Jane Nemke  
Eleanor K. Neumann  
Dan & Penny Niesen  
William & Janet Nohl
- Rodney Nordby & Nancy Anderson
- LaRay C. & Rosemarie B. Norlin  
Evan Norris  
Louann Norsetter  
Elizabeth Norton
- James M. & Monica R. O'Brien
- Porter O'Neill  
Elizabeth Olson  
Howard G. Olson  
Judith M. Osier  
David & Kathy Ott  
Michael & Judith Parrish Trust  
Jim & Joy Perry  
Joan & Greggar Petersen  
Ronda Pettey-Kucher & Jan Kucher
- Elizabeth Polcyn-Breen  
Lily Postel & Leon Price  
Ann & Dennis Puser  
Veronica E. Quednau  
Sam Racine & Michael Lundequam
- Kylee & Melissa Radulovich  
Charles & Lucy Ramshaw  
Coyla Rankin  
Fr. John E. Rasmus  
Beverly & Sydney Rauworth  
Linda Reber-Peterson  
Jayne C. Redman
- Diane Rew
- Marilyn Rhodes  
Richard & Tammy Ricksecker  
Craig & Donna Rider  
Al Rinaldi  
Darlene Stofflet Robinson  
Mary K. Rondou  
Ann Rood  
Peter & Connie Roop  
James & Mary Ann Rose  
Richard C. Rose  
John V. & Vicky S. Rosenbaum  
Ann L. Rosenberg
- Barb & Tim Rosenthal  
Heidi L. Roth  
Karen L. Rousseau  
Toni Rozek & Michael Cane  
Mary Elizabeth Ruppert  
Robert P. & Ann Rusch  
Mary & Chris Sadler  
Dr. Jim & Marge Sauer  
James L. & Frankie Saxton
- Larry J. Schaefer  
Lloyd Schaefer  
Robert & Connie Scharlau Trust  
Roger Schaumburg  
Madelyn Scheer
- Karen Scheibe  
Marilyn J. Schilling  
Donald J. & Frances Schimmel  
Raandi Schmidt  
Cheryl L. & Terrence R. Schoening  
Clay & Janell Schroeder  
Earl & Priscilla Schroeder  
Davida Schulman & Lawrence Schulman Revocable Trust
- Raymond & Patty Schultz  
Sue Schulz  
Tom & Lois Schumacher  
Gary Schwager & Dr. Gabrielle Banick  
Marvin & Dixie Schwenn  
Jane Sekulski  
Elmer & Carol Sevcik  
Lorrie A. Shafer
- Pat & Kathy Shaw
- Gail Shearer  
Karen R. Shevet Dinah
- Jordan L. Siegler & Lukas P. Dietz  
Linda Sielaff  
Claudena Skran & David Duncombe  
Judith N. Snavely  
Gary M. & Teresa Sommers Fund  
Stephanie L. Sorensen  
C. K. Sovinski  
Kathy Speck & Gabor Kemeny  
Richard D. Spencer-Dobson  
Brian M. Spindel
- Loretta I. Spry
- Tony & Jackie Staley
- Sharon Stark & Peter Livingston  
Ray & Harriet Statz  
Sue & Rodney Stein
- Bette Steinbrenner
- Bruce & Chris Steinhagen  
Judy C. Stevens
- Ralph & Melba Stockhausen  
Elaine B. Strassburg  
David & Dawn Stucki  
Brenda & Michael Susor  
Judith O. Sutton  
Susan R. Sweeney
- Kathleen M. Sylvester  
Donald & Donna Sypniewski
- John Szalkowski  
Marcia Tepp & Gary Hetzer
- Caryl & Bob Terrell  
William & Susan Tews  
Rosanne Theis & Dennis Thompson
- Elizabeth M. Theisen
- Ted Thieme  
Jean C. Thompson  
Nancy R. Thompson  
Dr. Carrie Thoms  
Samuel & Carin Tijan  
Dr. Joseph & Rhonda Trader  
Gary Tritz
- Nancy Troller  
Robert P. & Judith A. Tuttle  
Ellie Ullrich  
Janice R. Ulrich  
Matthew Underwood & Chong Lor
- Terry & Judy Valen  
Lynne & Keith Valiquette
- Nancy Van Dyke
- Rick & Gail Viergutz  
Jeff & Marty Virchow  
Jim Voborsky  
Charles Voight  
Paul M. Vraney  
Bruce A. & Lisa A. Wachholz  
Lorelei L. Walczak
- Marianne Walker  
Pat Watson  
Mary E. Watts
- Dr. Karen L. Wedde  
Brian Wegner & Cyndi Landes
- Debra Weitzel  
Charles & Christine Wellington  
Kathy & David Wellsandt  
Nancy L. Wendtland  
Frank & Kathy Wermes  
Katherine Westover  
Tim & Karen White  
Carolie Whiteway
- Jere Wickens & Carol Lawton
- Charles R. & Anita B. Williams  
Craig Williams  
Richard K. & Judith A. Williams  
Roger T. & Kristi A. Williams  
Gregg & Lisa Willkom  
Jack & Sandy Winder  
Helen L. Wineke  
Steve & Janet Wissink
- Kathleen E. Voit  
Wayne & Joan Spieker Wojciechowski  
Janet Wood  
Helen Wright  
Nancy & Chuck Wynn
- Wynn Jones Revocable Trust  
Peg Zappen & Pat Caffrey  
Janice K. Zawacki  
Bonita B. & Jeffrey Zdrale  
Aimee & David Ziegahn  
William Zimar & Susan Neitzel  
Janice Zindel

- Beverly Zulty  
Stephen & Ardis Zwicky  
Karl Zyhowski  
Anonymous (204)

## We Remember

- Randy Albert
- Helen Arms-Johnson
- Mary Anna Breister
- Catherine Burdick
- William Chick
- Maurene Christensen
- Janis Crandall
- Mary Dussling
- Constance Fox
- Robert R. Gersbach
- Susan J. Gundlach
- David Hodge
- John Huppert
- Dr. Stanley & Shirley Inhorn
- Sarah Jamison
- Dora Keller
- Sylvia Koch
- Larry W. Kraak
- Nancy & Gerald Krause
- Floreine J. Kurtzweil
- Charlotte Lemke
- Nancy L. Lersch
- Neil Luebke
- Judy McAusland
- Richard J. Mullen
- Dollie Newlun
- Angela Normington

- Charles Pruett & Edna Paske
- Gerald Plamann
- Marilyn Potter
- Michael G. Price
- Louis Reetz
- Joan C. Ross
- Mark Saunders
- Kathleen Schuette
- June Scott
- Carol Shaffer
- Jane Simmons
- Nancy J. Skifstad
- Bernard Weisblum
- Ralph D. Wycoff
- Susan Zabel
- Amber Zank
- Bonita B. Zdrale
- Barbara Zeug

## Wisconsin Business Partners

*PBS Wisconsin recognizes our partners in excellence – the businesses and organizations whose support helps PBS Wisconsin deliver trusted content and inspire communities across the state.*

- 4imprint
- Agrace
- All Energy Solar
- Alliant Energy Foundation
- American Players Theatre

- Aspirus
- Boldt Family Fund Inc.  
Cap Times Idea Fest
- Capitol Lakes
- Children's Theater of Madison
- Community Shares of Wisconsin  
Dancing Goat Distillery  
Dave's Party Fund
- Des Moines Art Center
- Door County Maritime Museum
- Emplify Health
- Epic Systems Inc.  
Firefly Farm & Mercantile  
First Supply
- Forward Theater Company  
Four Seasons Theatre  
Fox Cities Convention & Visitors Bureau
- Fox Cities Performing Arts Center  
Friends of Wisconsin State Parks
- Ganshert Landscapes  
George Washington's Mount Vernon  
Gunderson Funeral & Cremation Care
- Hooper Corporation
- International Crane Foundation  
Isthmus Engineering & Manufacturing Cooperative  
Katherine & John Davis Family Foundation
- Legacy Private Trust  
Mad Lit
- Madison Gas & Electric

- Madison Museum of Contemporary Art
- Madison Opera
- Madison Symphony Orchestra
- Mead Witter Foundation Inc.  
Meyer Theatre
- Natural Resources Foundation of Wisconsin  
The Nature Conservancy in Wisconsin
- Orange Tree Imports
- Overture Center for the Arts  
Park Bank  
Retirement Income Planning
- REAP Food Group
- Sergenian's Floor Coverings  
Sew n' Sew  
Summers Christmas Tree Farm
- TDS Telecom  
Thompson Investment Management
- Tony Trapp Remodeling
- TrustPoint  
UnityPoint Health - Meriter  
UW Health  
Walter Alexander Foundation
- Willy Street Co-op  
Wisconsin Academy of Sciences, Arts, & Letters
- Wisconsin Chamber Orchestra  
Wisconsin Greenhouse Company  
Wisconsin Veterans Chamber of Commerce
- Wollersheim Winery



# WISCONSIN PUBLIC RADIO

## Leadership Donors

*The following leadership donors provide essential support for WPR's trusted news and high-quality programming. Their generosity anchors our mission, and we are deeply grateful for the community of listeners who make this work possible.*

### \$25,000-\$999,999

- Bill & Barbara E. Manger
- Chuck & Barb Merry
- Mary E. Nikolay
- Mary & Lowell Peterson
- Janet Perkovich
- Roots & Wings / Firerose Foundation

- Terry & Mary Warfield  
Fred Wileman
- Rima D. & Michael Apple  
Joyce Bates
- Catherine Bloomer  
Marguerite Bradley & Doug Hill
- Robert W. & Susan T. Brown  
Sudie & Rich Burnham
- Douglas & Sherry Caves
- Joyce Clark Knutson
- John & Katherine Davis
- Ed & Jeanne Eloranta
- Jean E. Espenshade  
David & Karen Evens  
The Forest Foundation Household

### \$10,000-\$24,999

- John Idzikowski & Jane Stoltz
- Deborah Keller  
Margaret Luby
- John & Valerie McAuliffe  
Susanna S. Michaels  
Tom Neujahr
- Sonya Sauer in memory of  
Robert L. Sauer
- Drs. Ron & Molly Shiffler  
Scott Springman & Vicki Lee-Springman  
Janette Sweasy  
Albert Friedman & Susan Tikalsky  
Marilyn Unruh  
William Vanderson & Christina Gehrke  
Arnold & Ellen Wald

- Rebecca Wiegand & Marvin VanKekerix
- Pat Powers & Tom Wolfe  
Anonymous (6)

### \$2,500-\$9,999

- Grant & Tina Abert
- Francis A. & Georgia F. Ariens  
Fund within the Brillion Area Family of Funds  
Mary A. Austin  
Richard & Teri Bartnik  
Dr. Thomas & Mrs. Rebecca Bartow  
Virginia Bean & Ronald Daley
- Ed & Jackie Belka  
Eliza Bennett & Ben Marsh  
Eileen & Mike Benson

- Barry & Debbi Berman
- Niles & Linda Berman
- Betty Bienash  
Andy & Jean Black
- Randy & Marcia Blumer  
James Bohnen
- Cheryl Sampe Braun  
Suzanne Bucher  
James & Linda Bunkfeldt-Popp  
Elaine Burke
- Charles & Ann Cedergren
- Cummings Christensen Family  
Foundation  
Lau & Bea Christensen
- Richard & Nancy Christiansen
- Joyce Clark Knutson  
John E. Clarke
- Chris & John Coffin
- Robert & Mary Cole  
Miriam J. Colton  
John A. Cross & Joann Noe Cross  
J Corkey & Betty Custer
- Becky Dick
- Dean & C. Ann Dietrich  
Marilyn & Richard Dodd
- Carl & Barb Drake
- Janis P. Edwards  
Robert & Barbara Fahrenbach  
Wendy Fearnside & Bruce Meier
- James & Mary Fico  
Dan Fields & Jeanne Behrend
- Donald & Barbara Frank  
Susan French & Brian Driscoll  
Robert J. & Barbara A. Frommelt
- Bob & Sharon Gilson  
Adam M. & Carole Glass
- Nancy J Goldberg  
Barbara Gould  
The Grace Meyer Fund Household
- Nancy Graham
- Anne & Larry Graham  
Carol J. & James F. Gross  
Mary Gulbrandsen  
Karen Gunderman  
Molly Gurney & Phillip Simon  
H.J. Hagge Foundation Fund  
Steven C. Hall  
Charles & Judy Hastert  
Bruce & Kathryn Heling  
Miina Helske
- Gary Hetzer & Marcia Tepp
- Margaret Hickman  
Charles J. Hodulik  
J. Stan Hoffert & Sue Ford-Hoffert  
Terri & Verne Holoubek  
Ellen Hooker  
Patty & Richard Horecki
- Todd & Lin Huffman

- Jack Hurrish & Joan Karlen
- Karen & John Icke  
Gia Interlandi & Thomas P. Healy  
Richard K. Johnson  
Mary K. Jones  
Janet & Michael Kane  
Claude Kazanski &  
Madelyn Leopold
- Dave Keppert  
Michael J. & Ronda K. Kincheloe
- Shirley Klapperich &  
William Clendenning  
Kenneth Klubertanz
- Laura Kohler &  
Stephen C. Proudman
- David & Paula Kraemer Fund  
Jean Krizan
- Roberta Kurtz  
Drs. Martha & Douglas Lee  
David R. & Darlene A. Lee
- Roma Lenehan  
Robert J. Lenz  
Jason Li  
Sara C. Long
- Sandra & Thomas Lother
- Richard & Catherine Luxton
- Stewart Macaulay in memory of  
Jackie Macaulay  
Barb & Mike Madden
- Norma & Doug Madsen  
Ray & Pat Maertens  
Doug & Sharon Marschalek  
Patricia McConnell, DDS &  
Montgomery Elmer, MD  
Wendy McCurdy  
Jonathan McGee
- John & Linda Merrill  
Kevin & Lorrie Meyer
- Robert Molitor & Joan Sommers  
Mary L. Mowbray  
John H. & Janet H. Murphy  
Lynn Najem
- Geri Naymick
- David & Mary Neuhaus  
Megan Neuman
- Robert M. & Carol Niendorf
- Linda D. Noltén  
Jim K. Olson  
Juliet Olson
- Dr. Zorba & Penny Paster
- Joan Daniels Pedro
- Bruce Peters
- L.E. Phillips Family Foundation
- Linda & Rex Pope  
Mary Pulliam  
Diane Putzer
- Don & Roz Rahn
- Ed & Judy Ramsey

- Janet B. Robertson  
Julie Roenigk  
Peter & Connie Roop  
Dr. William Rupp &  
Dr. Janice Clarke  
Barbara Salas  
Jeri Schantz
- William J. & Barbara A. Schmidt  
Family Foundation  
Dean Schultz  
Patrick & Lydia Scott  
Cindy & Dale Secher  
Gary & Penelope Shackelford  
John & Jeanne Shearer  
Eric Siegal & Jeanne Howard
- Diana Slater  
May Sorum & Maggie Tucker
- Jim & Jan Spredemann  
Jeanne Stadler  
Margaret Stafford &  
Allan Czecholinski
- Barb Stanek
- Mary L. Staudenmaier  
Carol & Edward J. Stevenson  
MMG Foundation  
Elaine B. Strassburg  
Dr. John D. &  
Mrs. Deanna Swanson
- Jane Taylor Coleman  
Patrick & Janet Thompson Family  
Foundation  
Kathleen & Thomas Thousand
- Sharon & Tim Thousand  
Marilyn & Marc Thwaites  
Bridget A. Timm  
The Traven Family Fund  
Larry Urben
- Roger & Lynn Van Vreede  
Dina L. & Lee A. VandeBerg  
Betty Vogt  
Marcia D. Wagner
- Cliff & Betty Wall  
William & Sharran Warren  
Glenn H. & Jane K. Watts
- Peter & Lynne Weil  
Charles & Christine Wellington
- David Wenninger & Gale Fisher
- Patricia Wilde  
Charles R. & Anita B. Williams  
Wisconsin Master Gardeners  
Association  
MJ Wiseman  
Donald & Gladys Wisnefski
- Michael Wolff & Berni Mattsson
- Carole Wood
- Mary Zaborski  
Anonymous (21)

## Signature Circle

*The Signature Circle is an exceptional group of supporters who have included WPR in their will or other estate plan. They are visionary philanthropists who are providing a foundation of financial stability for the future of WPR.*

- Richard & Barbara Albrecht
- David T. Antonioni
- Dennis B. Appleton &  
Jennifer M. Buxton  
Sandra L. Arnn & Stanley Goldfarb  
Daniel Millen Atwood &  
Karen Neslund Atwood  
Norman & Carol Aulabaugh  
Patrick L. Bailey  
David & Shauna Baldwin  
Susan M. Balsamo
- John F. Barker  
Sarah Barry & Nathan Houdek  
Jeffrey B. & Angela B. Bartell  
Chuck Bauer & Chuck Beckwith  
David Beach  
Linda S. Becker &  
Gregory O. Eichelkraut
- Pat Behling & Ginger Anderle
- Dennis Edwin Behr &  
Joan Irene Behr  
James P. Bennett  
Niles & Linda Berman  
Jared Bessert
- Joseph & Patricia Biebl  
Travis Biggar  
Sandra Carlson Blank  
Sharon A. Bosacki  
Jacqueline Amy Bouvette
- Terry Boyd
- Laurel & JoAnn Brandt
- Michael Kevin Bridgeman  
Peggy Bronsberg &  
Bernie Langreck  
Thomas Brundage & Erin Sobek  
Dean T. & Martha E. Brusegar
- Sue & Jim Buck  
Paul & Mari Jo Buhle
- James A. Bullock  
Earl M. Burczyk  
Melanie Camellia
- Colleen M. Cantlon &  
James L. Greenwald  
Carrie Carroll & Drew Hanson  
Lou Ann Chartier
- James E. & Karen L. Christenson  
Edie Christian  
Roy Christianson
- Phyllis A. Christie

- Laura Cominetti & Steve Richter
- Carol J. Connors  
Ernst Conrath  
Michael J. Cooney & Donna Janus  
Mike & Donna Crane
- Lowell G. & Donna Dalsoren  
Income Trust
- David Day
- Nancy J. Deer  
Marjorie Elyn Dick  
Richard Dike & Joan Fudala  
Margaret L. Donner  
David H.B. Drake & Jennifer Esh  
Susan Lynn Duffy &  
Linda Susan Ganister  
Yvette Dunlap  
John Ebersol  
Michael M. Edlinger
- Roy & Stephanie Elkins
- Rita & Ed Emmenegger  
Leota B. Ester  
Sally Lynn Farley  
Joshua J. Feyen
- F.M. "Mike" Fitzpatrick  
Thomas W. Folsom &  
Sara Muender  
James R. Fowler
- Bryan & Nicole Frazier  
John Joseph Freehill
- Jim & Pat French
- Janice Galt  
Colleen M. Garvey  
David Gawlik  
Steven J. Gerber
- Nancy J. Goldberg &  
James L. Hoehn, MD
- Matthew L. &  
Lonette K. Gregersen
- Joel & Jacquelynn Greiner  
Anthony G. Gulig  
Douglas W. &  
Margaretann L. Haag  
Greg & Lynne Haasch
- Jane Ellen Haasch
- Lora L. Hagen
- Bob Halaska  
Wayne & Carole Halberg  
Marilyn Deutsch Hampton
- Ellen Hansen
- Marilyn Hansotia
- Judy & John Hartl
- David Haven Family
- Dale & Rebecca Heiking
- Joe & Pat Heim  
Marla Hemke
- William W. Henke &  
Patricia R. Henke  
James V. & Kathy Herman  
Barb J. Herreid
- Nancy Fulkerson Hill  
Lynn & Tom Hirsch  
Rebecca L. Hitchens  
Laurel J. Hoeth  
Peter Hoff
- Steve & Jane Holtzman
- Jeanette Holz  
John A. & Diane Hotynski  
Robert & Mary V. Hubbard
- Vicki Huffman & Alan Knight  
Linda Hurt  
Patricia & Gregory Iaccarino
- Jerome J. Jagielski  
Julia Jiannacopoulos
- David John Jindra  
Bob Johnson II  
Debra & Peter Johnson  
Marcella & Ron Jones  
Paul Karban  
Lee Keith & Karen A. Wesener  
Michael Keller  
Joan Kepros
- Joyce Clark Knutson
- Amy Kocho  
Kevin & Lynda Koehn  
Robert Koepcke  
Paul M. & Judy A. Kolosko
- Michael Kraft &  
Sandra Simpson-Kraft  
Susan Krause
- Larry Krueger  
Michael Krueger
- Bob & Mary Jane Lake  
Marti Lamar
- Frank J. LaPin  
Mary Jo LaPlant  
Jeanine Larson
- Mary T. Lasecki  
Robert J. Lauer  
Jack R. Lawton &  
Bonnie McMullin-Lawton  
Kathryn H. Lederhause  
Kathaleen C. & John E. Ledvina
- Robert J. Lenz  
Earl Lima & Laura DeGroot Lima  
Cathy J. Lindeman  
Jill Lorenz  
Jeff & Lorraine Luebben  
Peter & Jill Lundberg  
Alex E. Majeski  
Jeffrey Malison
- Dennis W. & Mary J. Martin
- Deborah J. & Dennis J. Mathson  
Andrea Matthias
- Cynthia Lou May  
Claudeen E. McAuliffe  
Keith McCarten  
Marian & John McClellan
- J.E. McClure Family Trust  
John & Jeanne McDowell  
Nancy McGill
- Susan McIntyre  
Marylynne Mehl
- Jeff & Lynn Meinders  
Patrick & Kay Meyer  
Stephen Miller
- Patrick & Sara Mitchell  
Pamela Moehring  
Joan Moeschberger
- Nancy Newell Moore  
Patricia Muehrer  
Marguerite Munsche  
Janet Murphy  
Larry & Maria Nagel
- Geri Naymick  
Meryl Lee Nelson  
Mary M. Nick
- Mary E. Nikolay
- Evan Norris  
Joan & Storm North
- Porter O'Neill  
Katharine Odell
- Elizabeth Olson  
Mary Orlowski  
Karen E. Owens  
Jody Padgham  
Michele & Michael Parker  
Dr. Tara L. Passow  
Patricia & Allan Patek  
Nancy Jo Patterson  
Linda S. Pennell
- Gary C. & Mary J. Peterson  
Stephen & Lynne Piotrowski  
Sue Poulette
- Lily Postel & Leon Price  
Margie Puls  
Terry Quesnel  
Kathy Radcliff
- Charles & Lucy Ramshaw  
Sandra J. Ransdell  
Les & Cindy Ray
- Marilyn Rhodes
- Richard & Tammy Ricksecker  
Lynn Roback  
Delores Robillard  
Sara Roltgen
- Heidi L. Roth  
Chris & Mary Sadler
- Rob & Mary Savage
- Marilyn J. Schilling  
Mary Ann & Tom Schroeder  
Gary & Penelope Shackelford
- Gail Shearer
- Karen R. Shevet Dinah
- Linda Sielaff
- Michael Sigman &  
Kelly Krieg-Sigman  
Rose & Jim Sime  
Richard Slone  
Janine Smiley  
Carolyn & Bob Sneed
- Tony & Jackie Staley
- Sharon Stark & Peter Livingston
- Ray & Harriet Statz  
Yoyi Steele
- Bruce & Chris Steinhagen
- Judy C. Stevens
- Elaine B. Strassburg  
Mike G. Stuart  
Cheryl Sutter
- Donald & Donna Sypniewski
- Marcia Tepp & Gary Hetzer  
Ann Terwilliger
- William & Susan Tews
- Jean C. Thompson  
Linda Thompson & Jeff Southern  
Sharon & Tim Thousand  
Susan Tikalsky & Albert Friedman  
Ayse Timmerman
- John E. Tipton & Kristine Harings
- Robert P. & Judith A. Tuttle  
John K. Urice & Penny Kolloff
- Lynne & Keith Valiquette
- Rick & Gail Viergutz
- Jeff & Marty Virchow  
Wolfgang Wallschlaeger  
Margaret S. Washa
- Pat Watson  
Sally A. Webb
- Brian Wegner & Cyndi Landes  
Elaine Wendt  
Ann Weronke  
Mark B. & Patricia A. Westen  
Ginny & Larry White  
Chris J. & Cindy Casey Widstrand  
Scott Wilcott
- Charles R. & Anita B. Williams
- Craig Williams  
Michael Winfrey  
MJ Wiseman
- Wayne & Joan  
Spieker Wojciechowski  
Jean Woodmansee-Poklasny  
Laureen Y. & Timothy P. Yoshino  
Charles Zabler
- Peg Zappen & Pat Caffrey  
Dean Ziemke
- Stephen & Ardis Zwicky  
Anonymous (38)

## We Remember

Randy Albert  
Richard & Sally Bilder  
Darlene Bushmaker  
David Alan Chover  
John E. Clarke  
Mike Coudray  
Janis Crandall  
Susan DeWitt Davie  
Susie Dedo-Jahoda  
Ray F. & Mary M. Evert  
Marylou Finnegan  
Constance Fox  
Peter Gangsei  
Roy & Donita Gross  
Russ Hefty  
Dr. Stanley & Shirley Inhorn  
Alice Jenson  
Celest King  
Mark Koepke  
Candace J. Krause  
Floreine J. Kurtzweil  
Richard LaBrie  
Nancy L. Lersch  
Cheri McGrath  
Dawn Newman  
Wilbert (Bill) Noltemeyer  
Eileen O'Sullivan  
Michael Obinger  
Edward Pavlick  
Michael G. Price  
Philip Rose  
Joan C. Ross  
Stan Scholl  
Jim Schwengel  
Lois Scorgie  
June Scott  
Elizabeth Seaquist  
Jane Simmons  
Nancy L. Stewart  
William Thomas  
Marilyn C. Unruh  
Dorothy M. Verhein  
Richard M. Warren  
Bernard Weisblum  
Michael L. Wild  
Barbara Zeug  
Anonymous (1)

## Wisconsin Business Partners

*Thanks to the trust and generosity of our business sponsors and arts and cultural partners, Wisconsin Public Radio remains a home for news, music, and shared knowledge.*

14 South Artists  
1913 Kickapoo Orchard  
● 4Imprint  
Abraham Lincoln Library & Museum  
Ace Hardware on Willy  
Ace of Space  
Actuate Improvement  
Advancing a Healthier Wisconsin Endowment  
Aging & Disability Resource  
● Agrace  
Al Johnson's Swedish Restaurant  
Aldo Leopold Foundation  
Aldo Leopold Nature Center  
Algoma Area Chamber of Commerce  
● All Energy Solar  
The Alliance  
● Alliant Energy Foundation  
● American Players Theatre  
Analog Ice Cream & Coffee  
Anaway Place  
Ancora Cafes  
Annie's Heirloom Seeds  
Anthology  
Appleton Boychoir  
Appleton Downtown Inc.  
Art House 360  
Art Walk Middleton  
Arts for All Wisconsin  
Associated Balance & Hearing  
Attic Theatre  
Avant Gardening & Landscaping  
Avenue Art & Company  
Bach Around the Clock  
Bach Dancing & Dynamite Society  
Bader Philanthropies  
Bagels Forever  
Baraboo Chamber of Commerce  
Bartolotta Restaurant Group  
Bayfield Chamber & Visitor Bureau  
Bekah Kates  
Bergstrom Mahler Museum  
Bethke Heating & Air Conditioning  
Big Lake Organics  
Big River Magazine  
Big Top Chautauqua  
Birch Creek Music Performance  
Black Saddle Bike Shop  
Blackhawk Folk Society/Festival  
Blue Ox Music Festival  
Bluegrass in the Pines LLC  
Blues on the Chippewa  
● The Boldt Company  
Bound to Happen Books  
Brewery Pottery  
The Bruce Company

Buckingham Inn B&B  
Burnie's Rock Shop  
Cambridge Arts Council  
Capital Area Carvers of Wisconsin  
Capital City Theatre  
● Capitol Lakes  
Casa De Corazon  
Central Wisconsin Children's Theatre  
Center for Visual Arts  
Central Chamber Chorale  
Central Cross Country Skiing  
Central Wisconsin Symphony Orchestra  
Century House  
Chad's Design Build  
Cable Hayward Area Arts Council  
Charles Allis & Villa Terrace  
Chequamegon Symphony Orchestra  
Children's Hospital of Wisconsin Community Services  
● Children's Theater of Madison  
Chippewa Valley Bee Expo  
Chippewa Valley Book Festival  
Chippewa Valley Jazz Orchestra  
Chippewa Valley Museum  
Chippewa Valley Symphony  
Chippewa Valley Theatre Guild  
Choral Arts Society of SE Wisconsin  
Citizens Utility Board  
Civic Symphony of Green Bay  
Common Ground Healthcare Co-op  
Commonweal Theatre  
Community Center of Hope  
Community Foundation of the Fox Valley Region  
Community Shares Wisconsin  
Conscious Carnivore  
Coon Creek Watershed  
Co-op Credit Union  
Couillard Solar Foundation  
Create Portage County  
Creative Energy  
Crossroads at Big Creek  
Cultured Kids Immersion School  
Chippewa Valley American Guild Organists  
D&S Bait Tackle & Fly Shop  
David Harris RBC Wealth Management  
David Sedaris on Tour  
● Des Moines Art Center  
Details  
Door Community Auditorium  
Door County Cottages  
Door County Historical Society

Door County Land Trust  
● Door County Maritime Museum  
Door County North  
Door Shakespeare  
Dotty Dumpling's Dowry  
Doulaing The Doula  
Downtown Madison Inc.  
Dr. Jan Schilling  
Dramm Corporation  
Dream House  
Dream House Dream Kitchens  
Driftless Area Art Festival  
Driftless Music Festival  
Driftless Music Gardens  
Driver Opera House Restoration  
Dudley Birder Chorale  
Duluth Superior Symphony Orchestra  
Dupaco Community Credit Union  
Early Music Now  
Easterseals Wisconsin  
Eau Claire Chamber Orchestra  
Eau Claire Children's Theatre  
Econorth  
Edward J. Okray Foundation  
● Emplify Health  
Emporium Presents  
Entrepreneur Fund  
Ephraim Business Council  
● Epic  
Evolution Exteriors  
Ewetopia  
Ex Fabula  
Explore La Crosse  
Fairshare CSA Coalition  
Fall Art Tour  
Family Natural Foods  
Family Power Music  
Farley's House of Pianos  
Fearing's Audio Visual Security  
Ferry Bluff Eagle Council  
Festival Choir of Madison  
Festival City Symphony  
Fine Music LLC  
First Unitarian Society  
Fishstock Theater  
Fitchburg Family Pharmacy  
Florentine Opera of Milwaukee  
Focus on Energy  
Fond Du Lac Dock Spiders  
Food + Farm Exploration Center  
Forage Kitchen  
Forward Beverage Company  
● Forward Theater Company  
Fourthstream  
Fox Chimney  
Fox Cities Magazine  
● Fox Cities Performing Arts

Fox Valley Symphony  
 FPC Live  
 Fragrant Isle Lavender  
 Frankly Music  
 Freiburger Consulting  
 Fresh Art Tour  
 Friends of Devils Lake State Park  
 Friends of the Porcupine Music  
 Froedtert & Medical College  
 Fromagination  
 Frozen River Film Festival  
 Full Service Insurance Agency  
 Full Spectrum Solar  
 Gail Ambrosius Chocolatier  
 Galena Center for the Arts  
 Gandy Dancer Festival  
 ● Ganshert Landscaping  
 Gathering Ground  
 Gathering Waters  
 Gibsons Water Care  
 Gimme Shelter  
 Glass Nickel Pizza Independent  
 Grand Oshkosh  
 Grand Theater  
 Grant County Historical Society  
 Great River Folk Festival  
 Great River Shakespeare Festival  
 Greater Green Bay Community Foundation  
 Greater State Street Business Association  
 Greater Wisconsin Agency on Aging Resources  
 Green Bay East High School  
 Green Box  
 Green Lake Festival of Music  
 Green Life Trading Company  
 Greenleaf Media  
 Guild Designs  
 H.J. Pertzborn Plumbing  
 Habitat Humanity of the Greater La Crosse Region  
 Hamilton Woodtype Print Museum  
 Handel Aria Competition  
 Hanson & Associates  
 Hanson's Garden Village  
 Hardy Gallery  
 Harmonious Wail Band  
 Harp Gallery  
 Humane Animal Welfare Society  
 Headwaters Council for the Performing Arts  
 HEC Hooves of Joy  
 Heider Center for the Arts  
 Heirloom Kitchen  
 HGA Engineering Group  
 Hidden Studios  
 Hill Valley Exploration Tour  
 Hinterland Brewery  
 History Museum at Castle  
 Hive of Madison  
 Hoey Apothecary  
 Holiday Folk Fair International  
 Holiday Vacations  
 ● Hooper Corporation  
 Hope Restores  
 Housewrights  
 Howard Young Foundation  
 Hoyos Consulting LLC  
 Hubbard Avenue Diner  
 Hy-Vee Eau Claire  
 Ian's Pizza  
 Inner Fire Yoga  
 ● International Crane Foundation  
 Irishfest La Crosse  
 Isthmus Partners LLC  
 Jade Presents LLC  
 Jankowska Psychotherapy  
 Jean & Mike Do The New York Times Crossword  
 Jewish Museum Milwaukee  
 John Michael Kohler Arts Center  
 Johnny's Steakhouse  
 Johnson Financial Group  
 Jonathan Miles Real Estate  
 K&A Greenhouse  
 Katherine Hamilton Wright LLC  
 Katy's American Indian Arts  
 Keck Furniture  
 Kerber Rose  
 Kimberly Clark Corporation  
 Klein Floral & Greenhouses  
 Kos A. Gastropub  
 Kwik Trip Inc.  
 La Crosse Community Theater  
 La Crosse Storytelling Festival  
 La Crosse Symphony Orchestra  
 La Taqueria  
 Lake Ridge Bank  
 Lakeland Care Inc.  
 Lanesboro Arts  
 Larson's General  
 Lawrence University  
 L.E. Phillips Career Development Center  
 ● Legacy Private Trust  
 Leigh Yawk Woodson Art Museum  
 Literacy Chippewa Valley  
 Little Luxuries  
 Live in Viroqua  
 Logjam Festival  
 LuCille Tack Center for the Arts  
 Lundin Tree  
 Luther College  
 Lutheran Social Services of Wisconsin  
 Madison Bach Musicians  
 Madison Black Chamber  
 Madison Community Foundation  
 Madison Jazz Festival  
 ● Madison Museum of Contemporary Art  
 ● Madison Opera Inc.  
 Madison Savoyards  
 ● Madison Symphony Orchestra  
 Madison Veterinary Specialists  
 Madison Weavers Guild  
 Madison's Central Business Improvement District  
 Mahaffay Law Office  
 Main Street Market  
 Manitowoc Symphony Orchestra  
 Markquart Toyota  
 Master Singers  
 Mccarty Law LLP  
 Mckinley Money LLC  
 ● Mead Witter Foundation  
 Mecca Trails  
 Menomonie Market Food Co-op  
 Menomonie Singers Inc.  
 ● Madison Gas & Electric  
 Midlands Psychological  
 Midsummer's Music Ltd  
 Midwest Japanese Gardens  
 Midwest Renewable Energy  
 Midwest Women's Herbal  
 Milwaukee Ballet  
 Milwaukee Choristers  
 Milwaukee Community Orchestra  
 Milwaukee Film  
 Milwaukee Opera Theatre  
 Milwaukee Repertory  
 Milwaukee Symphony Orchestra  
 Milwaukee Youth Symphony Orchestra  
 Mineral Point Chamber of Commerce  
 Mineral Point Historical Society  
 Mineral Point Opera House  
 Minneapolis-Saint Paul International Airport  
 Minnesota Marine Art Museum  
 Mitchell Hamline School of Law  
 Monk Botanical Gardens  
 Monroe County Tourism  
 Monteverdi Chorale  
 Mount Horeb Area Arts Association  
 Museum of Wisconsin Art  
 My Choice Wisconsin  
 National Railroad Museum  
 ● Natural Resources Foundation  
 North Central Wisconsin Master Gardeners  
 New Voices  
 Next Act Theatre  
 Northcentral Technical College  
 Northern Sky Theater  
 Northwind Book & Fiber  
 Northwind Solar  
 Oakwood Chamber Players  
 Olbrich Botanical Gardens  
 Oneida Tribe of Indians of Wisconsin  
 ● Orange Tree Imports  
 Orchid Growers Guild  
 Oshkosh Public Museum  
 Oshkosh Symphony Orchestra  
 ● Overture Center for the Arts  
 Pablo Center at the Confluence  
 Pabst Mansion  
 Pabst Theater Foundation  
 Park Printing Solutions  
 Parkwood Lodge  
 Peninsula Music Festival  
 Peninsula Players  
 Peninsula School of Art  
 Piano Arts  
 Pines Bach  
 Plato  
 PMI Entertainment Group  
 Port Washington Tourism Council  
 Potawatomi Bingo Casino  
 Prairie Du Chien Area Tourism  
 Prairie Fairy Native Plants  
 Prairie Nursery  
 Present Music  
 Pridefest  
 Pritzker Military Museum  
 Pump House Regional Arts  
 Qual Line Fence Corporation  
 Racine Art Museum  
 Racine Theatre Guild  
 Racine Zoo  
 Rahr-West Art Museum  
 Rainbow Project  
 ● Reap Food Group  
 Red Cedar Film Festival  
 Renaissance Theaterworks  
 Reynolds Transfer & Storage  
 Ridges & Rivers Book Festival  
 Rittenhouse Inn  
 River Alliance of Wisconsin  
 River Arts Inc.  
 Riverwater Partners LLC  
 Rockweiler Insulation  
 Rogers Behavioral Health  
 ● Roots & Wings Foundation  
 Rural Musicians Forum  
 Rustic Road Gallery  
 Rutabaga  
 Saint Johns on the Lake

Salon Piano Series  
 Sandbar Storytelling Festival  
 Savanna Institute  
 Schauer Arts Center  
 Schmidt Landscape Services  
 Schober Schober & Mitchell  
 Scholz Nonprofit Law  
 Schonheit Gardens  
 Seed Savers Exchange  
 ● Sergenian's Floor Coverings  
 Sew Complete  
 SFM Mutual Insurance  
 Shake Rag Alley  
 Sheboygan Symphony Orchestra  
 Shell Lake Art Festival  
 Shelley Moffatt Madison Partners  
 Signalpoint Asset Management  
 Sister Bay Advancement Association  
 Sister Bay Historical Society  
 Slipstream Inc.  
 Snowbelt Fireplace & Stove  
 South Beach Chamber  
 Southern Wisconsin Art Guild  
 Spring Green Arts & Crafts  
 St. Norbert College  
 St. Olaf College  
 St. Vincent De Paul Madison  
 Stafford Rosenbaum LLP  
 Stevens Point Festival of Arts  
 Stevens Point Orthopedics  
 Steve's Liquor  
 Stone Harbor Resort  
 Stoney Acres Farm  
 Stoughton Arts Council  
 Stoughton Chamber Music Festival  
 Stoughton Downtown Merchants  
 Stoughton Hospital  
 Stoughton Opera House  
 Stoughton Opera House-Friends  
 The Straight Thread  
 Sugar Maple Music Festival  
 Summerfest

Sustain Door  
 T Presents  
 Table Wine  
 Taliesin  
 Tall Pines Conservancy  
 TDS Custom Construction  
 ● TDS Telecom  
 The Brick  
 The Bur Oak  
 The Constructivists  
 The Glass Orchard  
 The Heirloom Craftsman  
 The Mining & Rollo Jamison Museum  
 The Moth  
 The Prairie Enthusiasts  
 The Sow's Ear  
 The Taqueria  
 Theater Lila  
 Theatre of Ballet Arts  
 Third Avenue Playworks  
 Thoreau College  
 Tomah Health  
 Tommy Bartlett  
 ● Tony Trapp  
 Tosa Tonight Inc.  
 Tree Health Management LLC  
 True Coffee Roasters  
 True North Festival  
 True Veterinary Care  
 ● Trust Point  
 Twenty Dirty Hands  
 University Opera  
 Upper House  
 US Venture  
 USAF Band of Mid America  
 UW Center For Healthy Minds  
 UW Global Health Institute  
 UW Konopka Lab  
 UW-Madison Campus  
 UW Tandem Press  
 UW-Eau Claire Center for International Education

UW-Eau Claire Viennese Ball  
 UW-Green Bay  
 UW-La Crosse Graduate & Extended Learning  
 UW-Madison College of Arts & Architecture  
 UW-Madison La Follette School of Public Affairs  
 UW-Madison School of Social Work  
 UW-Madison Science Expeditions  
 UW-Madison Varsity Band  
 UW-Oshkosh Social Work Department  
 UW-Oshkosh Theatre Department  
 UW-Stevens Point College of Letters & Science  
 UW-Stevens Point Music Department  
 UW-Stevens Point University Communications & Marketing  
 UW-Superior Marketing  
 Vernon County Historical Society  
 Viroqua Food Co-op  
 Virtuosi Live!  
 Vision Forward Association  
 Visit Wausau  
 Viterbo University of Fine Arts  
 Viterbo University  
 Vitruvian Farms  
 Viva Gallery Artists Co-op  
 Warshafsky Law Firm  
 Wasco Windows  
 Waukesha Blues Festival  
 Waunakee Remodeling  
 Wausau Conservatory of Music  
 Wausau Festival of Arts  
 Wausau Lyric Choir  
 Wausau Pro Musica  
 The Weidner  
 West Star Organics  
 Westconsin Credit Union  
 Wisconsin Alliance of Craftspeople  
 Wisconsin Area Music Industry

Wisconsin Book Festival  
 ● Wisconsin Chamber Orchestra  
 Wisconsin Chapter ASLA  
 Wisconsin Cheese Mart  
 Wisconsin Conservatory Music  
 Wisconsin Dells Tourism Bureau  
 Wisconsin Department of Agriculture  
 Wisconsin DNR Compost Recycle  
 Wisconsin DNR Endanger Resources  
 Wisconsin DNR Park Passes  
 Wisconsin DNR E-Cycle  
 Wisconsin Farmers Union  
 Wisconsin Film Festival  
 Wisconsin Institute for Discovery  
 Wisconsin Intergenerational Orchestra  
 Wisconsin Maritime Museum  
 Wisconsin Philharmonic  
 Wisconsin Rapids Area Convention & Visitors Bureau  
 Wisconsin River Valley Trout Unlimited  
 Wisconsin Union Theater  
 Wisconsin Youth Symphony Orchestras  
 Wild Birds Unlimited - Madison  
 ● Willy Street Co-op  
 Winding Roads Arts Tour  
 Windows of Wisconsin  
 Winona Health  
 Wisconsin Alliance for Civic Trust  
 Wisconsin Bike Fed  
 Wisconsin Cutlery & Kitchen Supply  
 Wisconsin Sheep Breeders Co-op  
 Wisconsin State Fair  
 Wisconsin Wetlands Association  
 Wispact  
 ● Wollersheim Winery/Distillery  
 Wonderstate Coffee  
 Wormfarm Institute/Fermentation  
 Write On, Door County

# LOOKING AHEAD

## 2026 Priorities

**“Looking ahead to 2026, Wisconsin Public Radio is focused on meeting a clear community need: audiences want more local content. Our journalists live and work across Wisconsin, and they deliver stories rooted in the communities we serve.”**

— Sarah Ashworth, Director of WPR



In 2026, Wisconsin Public Media will continue building a strong, unified future rooted in trust, service, and community partnership. We will strengthen independent, statewide journalism that helps Wisconsinites understand the issues shaping their lives and communities. We will deepen collaboration across PBS Wisconsin and WPR, leveraging our broadcast and digital platforms and

community connections to tell Wisconsin stories with greater reach and impact. We will expand freely accessible educational resources that support lifelong learning and civic understanding. And we will grow sustainable, community-powered support to ensure public media remains a reliable, essential service for every corner of Wisconsin, today and for generations to come.



**“Trust is at the center of everything we do. It is our responsibility to earn it every day. Nine out of ten respondents to our 2025 community survey said they saw PBS Wisconsin as trustworthy. That both affirms our mission and challenges us to ask why that’s not ten out of ten.”**

— Jon Miskowski, Director of PBS Wisconsin

## Land Acknowledgment Statement

PBS Wisconsin and WPR broadcast to the homelands of 12 Native American nations and their people. We acknowledge their resilience, ingenuity, contributions, and inherent sovereignty. And we remain committed to collaboration with these nations to ensure the public media landscape includes these stories and perspectives now and in the future. Learn more at [pbswisconsin.org/land](https://pbswisconsin.org/land) and [wpr.org/land](https://wpr.org/land).

# THE POWER OF PUBLIC MEDIA

**INSIGHTS.  
INSPIRATION.  
CONNECTION.**

**You** are at the center of public media.

Let's keep PBS Wisconsin and WPR strong together!

PBS Wisconsin and Wisconsin Public Radio (WPR) are services of UW-Madison's Wisconsin Public Media division and the Educational Communications Board.

Together, they serve communities statewide through trusted journalism and Wisconsin storytelling, music and cultural programming, lifelong learning, and educational resources – on air, online, and in person through live events, freely accessible to all and powered by community support.

[pbswisconsin.org](http://pbswisconsin.org) | [wpr.org](http://wpr.org)

