



RED GATES ARCHAEOLOGY LLC

13 January 2017

Jim Welsh
Executive Director
Natural Heritage Land Trust
303 South Patterson Street
Suite 6
Madison, Wisconsin 53703

Jim,

A cursory overview of the Wisconsin Archaeological Site Inventory (WASI) indicates that within Dunn Township alone there are currently 118 previously recorded archaeological sites ranging from Paleo Indian through Historic Native American and Euro-American sites. These sites include short term resource extraction camps, villages and burial mound groups as well as early homesteads and cemeteries. Written accounts and recording of extensive extant corn fields indicate a substantial Ho-Chunk presence in the immediate vicinity prior to and through the period of extensive Euro-American settlement. In short, the township's rich archaeological heritage includes the full sweep of human occupation across the landscape through time.

Within the Herro property are 6 previously recorded archaeological sites that are color coded in the aerial map below. These sites include the following: 47DA15 (Seiferth-Herro II): Woodland village-yellow, 47DA86 (Eli Johnson Group): 5 linear, 1 tapering linear, 2 crossing linears, 1 conical and 2 oval mounds-blue, 47DA88 (Indian Island): Ho-Chunk corn hills or garden beds-yellow, 47DA478 (Seiferth-Herro II): Multicomponent village-orange, 47DA480 (Bird Effigy): Destroyed bird effigy and multicomponent village-green, 47DA565 (Camp Leonard): Destroyed mound group consisting of 3 bird effigies, 2 conicals and 1 linear mound-red. The Herro property is obviously part of a substantial complex of villages and mound groups clustered on the resource rich isthmus between Lake Waubesa and Mud Lake. Undoubtedly, additional unrecorded sites are likely present on the property.

The most critical of the known sites is the Eli Johnson Mound Group (47DA86) located on a wooded rise overlooking the Yahara River channel between Lake Waubesa and Mud Lake. Aside from the presence of burials, the crossed linears are a very rare form and have led to speculation that the orientations could align with the summer and winter solstice, although concerted effort has not been taken to test this possibility. In addition, if Ho-Chunk garden beds survive at the Indian Island (47DA88) site, this would be another rare and very fortunate circumstance.

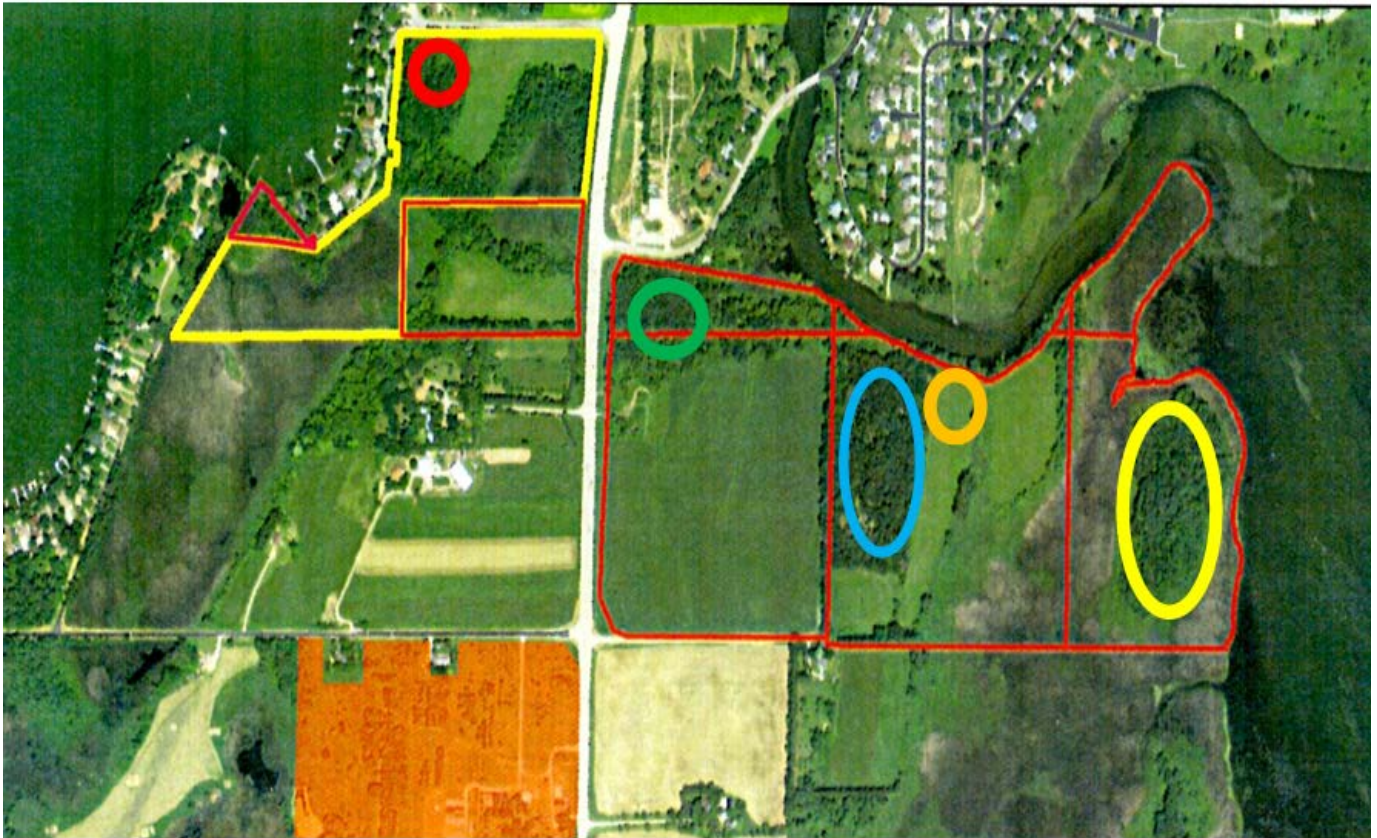
It is obvious from this quick summary that the Herro property contains critical archaeological sites pertaining to the long history of Native American *people* on this landscape. This is a remarkable situation considering the rapidly accelerating loss of such cultural heritage as the Madison metropolitan area continues to expand. If you have any questions pertaining to this summary please feel free to contact me at any time.

Sincerely,

Philip G. Millhouse, PhD, RPA

1009 Summit Avenue, Number 4, Stoughton, Wisconsin 53589
(608)-718-9324, redgatesarchaeology@gmail.com

PREVIOUSLY RECORDED ARCHAEOLOGICAL SITES



YELLOW-47DA15 (Seiferth-Herro II): Woodland village

BLUE-47DA86 (Eli Johnson Group): 5 linear, 1 tapering linear, 2 crossing linears, 1 conical and 2 oval mounds

YELLOW-47DA88 (Indian Island): Ho-Chunk corn hills or garden beds

ORANGE-47DA478 (Seiferth-Herro II): Multicomponent village

GREEN-47DA480 (Bird Effigy): Destroyed bird effigy and multicomponent village

RED-47DA565 (Camp Leonard): Destroyed mound group consisting of 3 bird effigies, 2 conicals and 1 linear mound